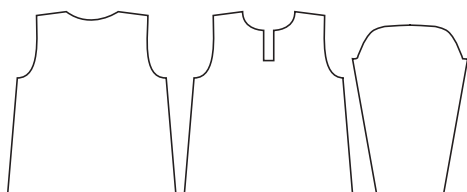


BABY'S STRIPED PURL FABRIC JUMPER WITH BAND OPTIONS AND MATCHING HAT



Intermediate Knitting



MEASUREMENTS	MTHS	0	3	6	9	12
Jumper To Fit Chest	cm	35	40	45	50	53
Actual Size (at underarm)	cm	39	44	49	54	57
Length (approx)	cm	22	26	29	33	35
Sleeve Length	cm	11	13	16	19	21

SHEPHERD COLOUR 4 ME PRINTS 8 PLY 50g balls

Main Colour (M – 5009 Pretty)	2	2	3	3	4
---------------------------------------	---	---	---	---	---

AND SHEPHERD COLOUR 4 ME 8 PLY 50g balls

Contrast Colour (C – 4984 Purple)	2	2	2	3	3
---	---	---	---	---	---

MEASUREMENTS MTHS 6 12

Hat To Fit Head	cm	45	50
-----------------	----	----	----

SHEPHERD COLOUR 4 ME 8 PLY 50g balls

Quantity (4984 Purple)	2	2
------------------------	---	---

Use only the yarn specified. Other yarns are likely to produce different results.

Quantities are approximate as they can vary between knitters.

Check the ball bands to ensure all yarn is from the same dye lot.

NEEDLES AND EXTRAS

- 1 pair each 3.25mm (UK 10) and 4.00mm (UK 8) knitting needles and a **set** of 3.25mm **double-pointed** knitting needles for **Jumper** or size needed to give correct tension.
- 1 stitch-holder for **Jumper**.
- 1 pair 4.00mm (UK 8) knitting needles (optional) and a **set** of 4.00mm **double-pointed** knitting needles for **Hat** or size needed to give correct tension.

- pom pon maker or piece of cardboard for **Hat**.
- wool needle for sewing seams and sewing in ends.

TENSION

22 sts and 30 rows to 10cm over stocking st, using 4.00mm needles.

To work a tension square, using 4.00mm needles, cast on 33 sts.

Work 44 rows stocking st. Cast off loosely.

Check your tension carefully.

If less sts to 10cm use smaller needles, if more sts use bigger needles.

With correct yarn and tension, your Jumper will look like our photographs.

SPECIAL ABBREVIATION

MB = make bobble – (K1, P1, K1, P1, K1) all into next st, **turn**, sl 1, P4, **turn**, sl 1, K4, pass 2nd, 3rd, 4th and 5th sts over first st, completing bobble.

For abbreviations and more on knitting techniques, please see our website.

JUMPER

BACK

Using 3.25mm needles and **C**, cast on **53** (57-65-69-73) sts.

Option 1 – Bobble Band

1st row (right side) – K1, * P1, K1, rep from * to end.

Rep last row for moss st.

Work a further 3 rows moss st.

5th row – K1, * P1, **MB**, P1, K1, rep from * to end (if necessary, push bobbles onto right side of work).

Work a further **3** (3-5-5-5) rows moss st, inc **0** (2-0-0-0) sts evenly across last row ... **53** (59-65-69-73) sts.

Option 2 – Moss Band

1st row (right side) – K1, * P1, K1, rep from * to end.

Rep last row for moss st.

Work a further **7** (7-9-9-9) rows moss st, inc **0** (2-0-0-0) sts evenly across last row ... **53** (59-65-69-73) sts.

For Both Options –

Change to 4.00mm needles.

Beg Stripe Patt –

NOTE – 2 balls of **M** are used when working stripes. This allows **M** to be carried up at side edge without breaking off after each stripe.

Using **M**, **1st row** (right side) – Purl.

2nd row – Knit.

Using **C**, **3rd row** – Purl.

Using another ball of **M**, **4th row** – Knit.

5th row – Purl.

Using **C**, **6th row** – Knit.

Last 6 rows form stripe patt for rem, noting to alternate balls of **M** (as before).

Shape Sides –

Dec one st at each end of next row, then in every foll **8th** (10th-**12th**-14th-**16th**) row until **45** (51-**57**-61-**65**) sts rem.

Work **5** (7-9-11-9) rows.

Shape Armholes –

Keeping stripe patt correct, cast off 2 sts at beg of next 2 rows ... **41** (47-**53**-57-**61**) sts.

Dec one st at each end of next row, then in every foll alt row **0** (1-**2**-2-**2**) times ... **39** (43-**47**-51-**55**) sts. **

Work **19** (21-**21**-25-**27**) rows.

Shape Back Neck –

Next row – **P11** (12-**14**-15-**17**), **turn**.

Cont on these **11** (12-**14**-15-**17**) sts for right side of back neck.

Next row – K2tog, knit to end.

Shape Shoulder -

Next row – Cast off **5** (5-6-6-7) sts, purl to last 2 sts, P2tog.

Work 1 row. Cast off rem **4** (5-6-7-8) sts.

Slip next **17** (19-19-21-21) sts onto stitch-holder and leave for neckband. With right side facing, join appropriate colour to rem **11** (12-14-15-17) sts for left side of back neck and purl to end.

Next row – Knit to last 2 sts, K2tog.

Next row – P2tog, purl to end.

Shape Shoulder -

Cast off **5** (5-6-6-7) sts at beg of next row.

Work 1 row. Cast off rem **4** (5-6-7-8) sts.

FRONT

Work as for Back to ******.

Work 1 row.

Divide for Front Opening -

Next row – P**17** (19-21-23-25), cast off next 5 sts, purl to end.

Cont on these **17** (19-21-23-25) sts for right side of front opening.

Work **7** (9-9-11-13) rows.

Shape Neck -

Next row – Cast off **3** (4-4-4-4) sts, purl to end ... **14** (15-17-19-21) sts.

Dec one st at neck edge in every foll alt row until **9** (10-12-13-15) sts rem.

Work 2 rows.

Shape Shoulder -

Cast off **5** (5-6-6-7) sts at beg of next row.

Work 1 row. Cast off rem **4** (5-6-7-8) sts.

With wrong side facing, join appropriate colour to rem **17** (19-21-23-25) sts for left side of front opening.

Work **8** (10-10-12-14) rows.

Shape Neck -

Next row (wrong side) – Cast off **3** (4-4-4-4) sts, knit to end ... **14** (15-17-19-21) sts.

Dec one st at neck edge in next row, then in every foll alt row until **9** (10-12-13-15) sts rem.

Work 1 row.

Shape Shoulder -

Cast off **5** (5-6-6-7) sts at beg of next row.

Work 1 row. Cast off rem **4** (5-6-7-8) sts.

SLEEVES

Using 3.25mm needles and **C**, cast on **29** (29-29-33-33) sts.

Beg Band Patt -

Work **8** (8-10-10-10) rows Bobble OR Moss Band as for Back, inc

0 (2-2-0-0) sts evenly across last row ... **29** (31-31-33-33) sts.

Change to 4.00mm needles.

Beg Stripe Patt -

Work 4 rows stripe patt as for Back.

Keeping stripe patt correct, inc one st at each end of next row, then in every foll **4th** (6th-6th-8th-8th) row until there are **37** (39-41-43-45) sts.

Cont without further shaping until Sleeve measures **11** (13-16-19-21) cm from beg, working last row on wrong side.

Shape Top -

Keeping stripe patt correct, cast off 2 sts at beg of next 2 rows ... **33** (35-37-39-41) sts.

Dec one st at each end of next row, then in every foll alt row until 25 sts rem, then in every row until 15 sts rem.

Cast off rem sts.

NECKBAND

Join shoulder seams.

NOTE – We suggest using a set of double-pointed needles for ease of working the neckband. Work backwards and forwards in rows. With right side facing, using **set** of 3.25mm **double-pointed** needles and **C**, knit up **11** (12-12-13-13) sts evenly along right side of front neck to shoulder seam, knit up 3 sts evenly along right side of back neck, knit across sts from back stitch-holder, knit up 3 sts evenly along left side of back neck to shoulder seam, then knit up **11** (12-12-13-13) sts evenly along left side of front neck ... **45** (49-49-53-53) sts.

Option 1 - Bobble Band

Work 5 rows moss st as for Back.

6th row – K1, * P1, **MB**, P1, K1, rep from * to end.

Work 3 rows moss st.

Cast off **loosely** in patt.

Option 2 - Moss Band

Work 9 rows moss st as for Back.

Cast off **loosely** in patt.

LEFT FRONT BAND

With right side facing, using 3.25mm needles and **C**, knit up **13** (13-13-17-17) sts evenly along side edge of neckband and left side of front opening.

Complete as for neckband.

RIGHT FRONT BAND

With right side facing, using 3.25mm needles and **C**, knit up **13** (13-13-17-17) sts evenly along right side of front opening and side edge of neckband.

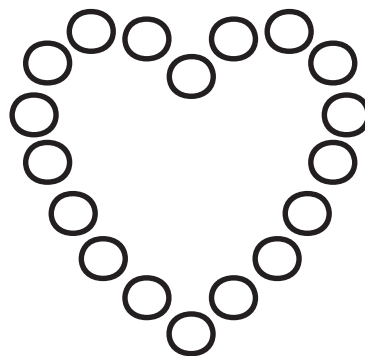
Complete as for neckband.

HEART BOBBLES (optional, make 36)

Using 4.00mm needles and **C**, cast on one st and cont as folls for bobble – (K1, yfwd, K1, yfwd, K1) all into one st, **turn**, K5, **turn**, P5, **turn**, K5, **turn**, P5, **turn**, K2tog, K1, K2tog, **turn**, sl 1, P2tog, pssso. Fasten off securely, leaving a long end for attaching bobble.

TO MAKE UP

With a slightly damp cloth and warm iron, press lightly on wrong side, avoiding bands. Join side and sleeve seams. Sew in sleeves. Sew end of right front band to 5 sts cast off at centre front. Slip-stitch end of left front band in position underneath. If desired, using 18 bobbles for each heart and following diagram (see below), sew bobbles in position to front as pictured.



HAT

First Ear Flap -

Using 4.00mm needles, cast on 5 sts.

1st row (right side) – P1, (K1, P1) twice.

2nd row – Inc in first st, K1, P1, K1, inc in last st ... 7 sts.

3rd row – Inc in first st, (P1, K1) twice, P1, inc in last st ... 9 sts.

4th row – Inc in first st, (K1, P1) 3 times, K1, inc in last st ... 11 sts.

5th row – Inc in first st, (P1, K1) 4 times, P1, inc in last st ... 13 sts.

Keeping moss st patt correct, inc (as before) in first and last st of every row until there are **31** (35) sts.

Work **0** (2) rows moss st patt. ******

Break off yarn and leave sts on a spare needle.

Second Ear Flap -

Work as for First Ear Flap to ******.

Do not break off yarn.

Beg Hat -

Next row – Patt across Second Ear Flap sts, **turn**, cast on **11** (13) sts, **turn**, with right side facing, patt across First Ear Flap sts, **turn**, cast on 7 sts, **turn** ... **80** (90) sts.

Rem of Hat is worked in rounds. Slip sts onto **set** of 4.00mm **double-pointed** needles so that right side is facing, dividing sts as evenly as possible between 3 needles). Join to work in rounds, taking care not to twist cast on edges.

1st round – * K1, P1, rep from * to end.

2nd round – * P1, K1, rep from * to end.

Last 2 rounds form moss st patt for rem.

Cont in patt until work measures **10** (11) cm from Hat cast on (excluding ear flaps), ending with a 2nd round.

Shape Crown -

1st round – * Patt **13** (15), P3tog, rep from * to end ... **70** (80) sts. Work 3 rounds.

5th round – * Patt **11** (13), P3tog, rep from * to end ... **60** (70) sts. Work 3 rounds.

9th round – * Patt **9** (11), P3tog, rep from * to end ... **50** (60) sts. Work 3 rounds.

13th round – * Patt **7** (9), P3tog, rep from * to end ... **40** (50) sts. Work 1 round.

15th round – * Patt **5** (7), P3tog, rep from * to end ... **30** (40) sts. Work 1 round.

17th round – * Patt **3** (5), P3tog, rep from * to end ... **20** (30) sts. Work 1 round.

Size 12 months only -

19th round – * Patt 3, P3tog, rep from * to end ... 20 sts. Work 1 round.

Both sizes -

Next round – * K1, P3tog, rep from * to end ... 10 sts.

Break off yarn, thread end through rem sts, draw up tightly and fasten off securely.

TO MAKE UP

DO NOT PRESS. Using pom pon maker or two circles of cardboard 9cm in diameter with a 4cm hole in the centre, make a pom pon. Attach to top of hat, as pictured.



A DIVISION OF AUSTRALIAN COUNTRY SPINNERS PTY. LTD.

Level 7

409 St Kilda Road

MELBOURNE VICTORIA 3004

A.B.N 85 055 366 590

T +61 3 9380 3888

F +61 3 9820 0989

www.shepherd yarns.com.au

 /auspinners

This publication is protected by copyright. Reproduction in any form (including photocopying) without prior permission from Australian Country Spinners will lead to proceedings being brought to restrain any infringement. The only exception is photocopying to enlarge graphs and written instructions for graphs. We have made every effort to ensure that these instructions are accurate and complete. We cannot however be responsible for variations in individual work, human error, typographical mistakes or if yarn other than the recommended Shepherd yarn is used.



CUSTOMER HOTLINES

For expert advice & information on yarn availability –

Call within New Zealand on 03 – 323 6665

Call within Australia on 1800 333 642