

# TEXTURED KIMONO JACKET

■■■ Intermediate

MEASUREMENTS	XS	S	M	L	XL
To Fit Bust	cm 70	80	90	100	110
Actual Size	cm 80	90	100	110	120
Length	cm 64	65	66	67	68
Sleeve Length (incl cuff)	cm 16	16	16	16	16

## PATONS ZHIVAGO 50g balls

Quantity	12	13	15	16	17
----------	----	----	----	----	----

Use only the yarn specified. Other yarns are likely to produce different results.

Quantities are approximate as they can vary between knitters.

Check the ball bands to ensure all yarn is from the same dye lot.

## NEEDLES AND EXTRAS

- 1 pair each 3.25mm (UK 10) and 4.00mm (UK 8) knitting needles or size needed to give correct tension.
- 2 safety pins.
- 3 buttons.
- wool needle for sewing seams.

## TENSION

22 sts and 26 rows to 10cm over patt, using 4.00mm needles.

To work a tension square, using 4.00mm needles, cast on 37 sts. Work 40 rows main patt as for size XL of Back. Cast off loosely.

Check your tension carefully.

If less sts to 10cm use smaller needles, if more sts use bigger needles.

For abbreviations and more on knitting techniques, please see [www.patonsyarns.com.au](http://www.patonsyarns.com.au)

## BACK

Using 3.25mm needles, cast on **99** (103-121-127-145) sts.

**NOTE** – This instruction has been written specifically for the stitch pattern given. Using any other stitch may result in a garment that is the wrong shape or size.

Work 12 rows garter st (1st row is wrong side).

Change to 4.00mm needles.

**Foundation row** (wrong side) – Purl.

### Beg Main Patt –

Work rows 1 to 10 incl from Graph (see last page) or written instructions as follows:

**1st row** – K5 (7-4-7-4), K2tog, yfwd, K1, \* yfwd, sl 1, K1, pssso, K7, K2tog, yfwd, K1, rep from \* to last **7** (9-6-9-6) sts, yfwd, sl 1, K1, pssso, K5 (7-4-7-4).

**2nd and foll alt rows** – Purl.

**3rd row** – K5 (7-4-7-4), K2tog, yfwd, K1, \* yfwd, K1, sl 1, K1, pssso, K5, K2tog, K1, yfwd, K1, rep from \* to last **7** (9-6-9-6) sts, yfwd, sl 1, K1, pssso, K5 (7-4-7-4).



**5th row** – K5 (7-4-7-4), K2tog, yfwd, K1, \* yfwd, K2, sl 1, K1, pssso, K3, K2tog, K2, yfwd, K1, rep from \* to last **7** (9-6-9-6) sts, yfwd, sl 1, K1, pssso, K5 (7-4-7-4).

**7th row** – K5 (7-4-7-4), K2tog, yfwd, K1, \* yfwd, K3, sl 1, K1, pssso, K1, K2tog, K3, yfwd, K1, rep from \* to last **7** (9-6-9-6) sts, yfwd, sl 1, K1, pssso, K5 (7-4-7-4).

**9th row** – K5 (7-4-7-4), K2tog, yfwd, K1, \* yfwd, K4, sl 1, K2tog, pssso, K4, yfwd, K1, rep from \* to last **7** (9-6-9-6) sts, yfwd, sl 1, K1, pssso, K5 (7-4-7-4).

**10th row** – Purl.

Rows 1 to 10 incl form main patt.

Work a further 10 rows patt.

### Shape Sides –

Keeping patt correct, dec one st at each end of next row, then in every foll 34th row until **93** (97-115-121-139) sts rem. Work 9 rows patt (without further dec).

### Shape for Sleeves –

**Next row** – Cast on 26 sts, K4 (6-3-6-3), K2tog, (yfwd, K1, yfwd, sl 1, K1, pssso, K7, K2tog) twice, yfwd, K1, \* yfwd, K4, sl 1, K2tog, pssso, K4, yfwd, K1, rep from \* to last **4** (6-3-6-3) sts, yfwd, sl 1, K1, pssso, K2 (4-1-4-1).

**Next row** – Cast on 26 sts, purl to end ... **145** (149-167-173-191) sts.

**Next row** – K4 (6-3-6-3), \* K2tog, yfwd, K1, yfwd, sl 1, K1, pssso, K7, rep from \* to last **9** (11-8-11-8) sts, K2tog, yfwd, K1, yfwd, sl 1, K1, pssso, K4 (6-3-6-3).

**Next row** – Purl.

**Next row – K4 (6-3-6-3)**, K2tog, (yfwd, K1, yfwd, sl 1, K1, pssso, K7, K2tog) twice, yfwd, K1, \* yfwd, K1, sl 1, K1, pssso, K5, K2tog, K1, yfwd, K1, rep from \* to last **30 (32-29-32-29)** sts, (yfwd, sl 1, K1, pssso, K7, K2tog, yfwd, K1) twice, yfwd, sl 1, K1, pssso, **K4 (6-3-6-3)**.

**Next row – Purl.**

Last 2 rows form patt for first and last **28 (30-27-30-27)** sts (sleeve sts).

Keeping sleeve and main patt correct as placed, work **48 (50-52-54-58)** rows patt.

### Shape Shoulders –

Keeping patt correct, cast off **11 (12-14-14-16)** sts at beg of next 6 rows, then **13 (12-13-14-15)** sts at beg of foll 4 rows.

Cast off rem **27 (29-31-33-35)** sts.

## LEFT FRONT

Using 3.25mm needles, cast on **52 (54-63-66-75)** sts.

Work 11 rows garter st (1st row is wrong side).

**12th row –** Knit to last 8 sts, **turn**, slip these 8 sts onto a safety pin for Left Front Band.

Change to 4.00mm needles.

**Foundation row –** Cast on one st (seam st), purl to end ... **45 (47-56-59-68)** sts.

### Beg Main Patt –

Work rows 1 to 10 incl from Graph as given for Left Front or written instructions as follows:

**1st row – K5 (7-4-7-4)**, K2tog, yfwd, K1, \* yfwd, sl 1, K1, pssso, K7, K2tog, yfwd, K1, rep from \* to last st, K1.

**2nd and foll alt rows – Purl.**

**3rd row – K5 (7-4-7-4)**, K2tog, yfwd, K1, \* yfwd, K1, sl 1, K1, pssso, K5, K2tog, K1, yfwd, K1, rep from \* to last st, K1.

**5th row – K5 (7-4-7-4)**, K2tog, yfwd, K1, \* yfwd, K2, sl 1, K1, pssso, K3, K2tog, K2, yfwd, K1, rep from \* to last st, K1.

**7th row – K5 (7-4-7-4)**, K2tog, yfwd, K1, \* yfwd, K3, sl 1, K1, pssso, K1, K2tog, K3, yfwd, K1, rep from \* to last st, K1.

**9th row – K5 (7-4-7-4)**, K2tog, yfwd, K1, \* yfwd, K4, sl 1, K2tog, pssso, K4, yfwd, K1, rep from \* to last st, K1.

**10th row – Purl.**

Rows 1 to 10 incl form main patt.

Work a further 10 rows patt.

### Shape Side –

Keeping patt correct, dec one st at beg (side edge) of next row, then in foll 34th row once ... **43 (45-54-57-66)** sts.

Work 13 rows patt.

Tie a coloured thread at beg of last row to indicate beg of neck shaping.

### Beg Neck Shaping –

**NOTE –** Care must be taken when shaping in this patt. Do not work a 'K2tog', 'sl 1, K1, pssso', or 'sl 1, K2tog, pssso' unless the corresponding yfwds can be worked and vice versa.

Keeping patt correct, dec one st at end (neck edge) of next row, then in every foll **8th (8th-8th-6th-6th)** row **3 (3-3-4-4)** times, AT SAME TIME dec one st at beg (side edge) in foll 21st row once ... **38 (40-49-51-60)** sts.

Work 5 rows patt.

## Shape for Sleeves –

**Next row –** Cast on 26 sts, **K4 (6-3-6-3)**, K2tog, (yfwd, K1, yfwd, sl 1, K1, pssso, K7, K2tog) twice, yfwd, K1, patt to end ... **64 (66-75-77-86)** sts.

Keeping sleeve and main patt correct as placed (as for Back), dec one st at neck edge in every foll **10th (10th-8th-8th-8th)** row from previous dec until **59 (60-68-70-78)** sts rem.

Work **9 (1-7-9-5)** rows patt.

### Shape Shoulder –

Keeping patt correct, cast off **11 (12-14-14-16)** sts at beg of next row, then in foll alt rows twice, then **13 (12-13-14-15)** sts at beg of foll alt row.

Work 1 row.

Cast off rem **13 (12-13-14-15)** sts.

## RIGHT FRONT

Using 3.25mm needles, cast on **52 (54-63-66-75)** sts.

Work 11 rows garter st (1st row is wrong side).

**12th row –** K8, slip these 8 sts onto safety pin for Right Front Band, cast on one st (seam st), knit to end ... **45 (47-56-59-68)** sts.

Change to 4.00mm needles.

**Foundation row – Purl.**

### Beg Main Patt –

Work rows 1 to 10 incl from Graph as given for Right Front or written instructions as follows:

**1st row – K2**, \* yfwd, sl 1, K1, pssso, K7, K2tog, yfwd, K1, rep from \* to last **7 (9-6-9-6)** sts, yfwd, sl 1, K1, pssso, **K5 (7-4-7-4)**.

**2nd and foll alt rows – Purl.**

**3rd row – K2**, \* yfwd, K1, sl 1, K1, pssso, K5, K2tog, K1, yfwd, K1, rep from \* to last **7 (9-6-9-6)** sts, yfwd, sl 1, K1, pssso, **K5 (7-4-7-4)**.

**5th row – K2**, \* yfwd, K2, sl 1, K1, pssso, K3, K2tog, K2, yfwd, K1, rep from \* to last **7 (9-6-9-6)** sts, yfwd, sl 1, K1, pssso, **K5 (7-4-7-4)**.

**7th row – K2**, \* yfwd, K3, sl 1, K1, pssso, K1, K2tog, K3, yfwd, K1, rep from \* to last **7 (9-6-9-6)** sts, yfwd, sl 1, K1, pssso, **K5 (7-4-7-4)**.

**9th row – K2**, \* yfwd, K4, sl 1, K2tog, pssso, K4, yfwd, K1, rep from \* to last **7 (9-6-9-6)** sts, yfwd, sl 1, K1, pssso, **K5 (7-4-7-4)**.

**10th row – Purl.**

Rows 1 to 10 incl form main patt.

Work a further 10 rows patt.

### Shape Side –

Keeping patt correct, dec one st at end (side edge) of next row, then in foll 34th row once ... **43 (45-54-57-66)** sts.

Work 13 rows patt.

Tie a coloured thread at end of last row to indicate beg of neck shaping.

### Beg Neck Shaping –

Keeping patt correct, dec one st at beg (neck edge) of next row, then in every foll **8th (8th-8th-6th-6th)** row **3 (3-3-4-4)** times, AT SAME TIME dec one st at end (side edge) in foll 21st row once ... **38 (40-49-51-60)** sts.

Work 6 rows patt.

### Shape for Sleeve –

**Next row** – Cast on 26 sts, purl to end ... **64** (66-75-77-86) sts.

**Next row** – Patt to last **30** (32-29-32-29) sts, (yfwd, sl 1, K1, pssso, K7, K2tog, yfwd, K1) twice, yfwd, sl 1, K1, pssso, **K4** (6-3-6-3).

Keeping sleeve and main patt correct as placed (as for Back), dec one st at neck edge in every foll **10th** (10th-8th-8th-8th) row from previous dec until **59** (60-68-70-78) sts rem.

Work **10** (2-8-10-6) rows patt.

### Shape Shoulder –

Keeping patt correct, cast off **11** (12-14-14-16) sts at beg of next row, then in foll alt rows twice, then **13** (12-13-14-15) sts at beg of foll alt row.

Work 1 row.

Cast off rem **13** (12-13-14-15) sts.

### CUFFS

Using mattress st, join shoulder and upper sleeve seams.

With right side facing and using 3.25mm needles, knit up

**76** (80-84-88-92) sts evenly along sleeve edge.

Work 13 rows garter st.

Cast off.

### LEFT FRONT BAND AND COLLAR

**NOTE** – In order to keep front edges neat, we recommend joining yarn at seam edge rather than front edge.

Slip 8 sts from Left Front safety pin onto a 3.25mm needle so that right side is facing for first row, cast on one st (seam st), knit to end ... 9 sts.

Work 99 rows garter st.

Tie a coloured thread at end of last row.

### Beg Shaping for Collar –

Cont in garter st, inc one st at beg of next row, then in every foll alt row until there are 23 sts, then in every foll 4th row until there are 36 sts.

Cont in garter st (without further inc) until collar is length required to fit (slightly stretched) evenly along left front neck shaping from coloured thread to shoulder, ending with a right side row.

### Beg Turnings –

**NOTE** – When pattern specifies ‘turn’ – proceed as follows (to avoid holes in work) – take yarn under needle and onto other side of work, slip next st onto right-hand needle, take yarn under needle and back to original position, slip st back onto left-hand needle, then turn and proceed as instructed in patt.

**1st row** – K30, **turn**.

**2nd row** – Knit to end.

**3rd row** – Knit across all sts to end.

**4th row** – Knit.

Rep rows 1 to 4 incl until short edge of work fits evenly along half of back neck, ending with a 4th row.

Cast off loosely.

### RIGHT FRONT BAND AND COLLAR

Slip 8 sts from Right Front safety pin onto a 3.25mm needle so that wrong side is facing for first row, cast on one st (seam st), knit to end ... 9 sts.

Work 22 rows garter st.

**1st row** – K3, cast off 2 sts, K4.

**2nd row** – K4, **turn**, cast on 2 sts, **turn**, K3 ... buttonhole.

Work 34 rows garter st.

Rep last 36 rows once, then 1st and 2nd rows once ... 3 buttonholes.

Work 2 rows garter st.

Tie a coloured thread at beg of last row.

### Beg Shaping for Collar –

Cont in garter st, inc one st at end of next row, then in every foll alt row until there are 23 sts, then in every foll 4th row until there are 36 sts.

Cont in garter st (without further inc) until collar is length required to fit (slightly stretched) evenly along right front neck shaping from coloured thread to shoulder, ending with a wrong side row.

### Beg Turnings –

**1st row** – K30, **turn**.

**2nd row** – Knit to end.

**3rd row** – Knit across all sts to end.

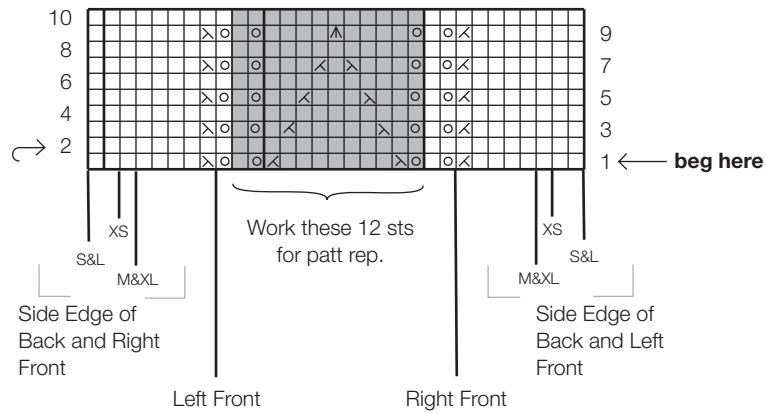
**4th row** – Knit.

Rep rows 1 to 4 incl until short edge of work fits evenly along rem half of back neck, ending with a 4th row.

Cast off loosely.

### TO MAKE UP

DO NOT PRESS. Using mattress stitch, join side and sleeve seams and cast off edges of collar together. Sew remainder of front bands and collar in position, placing collar seam to centre back neck and matching coloured threads. Sew on buttons.



**KEY – Shaded area represents stitch repeat.**

- = Knit st on right side, purl st on wrong side (stocking st)
- ⊖ = yfwd (to make a st)
- ⊗ = K2tog
- ⊠ = sl 1, K1, pssso
- ⊡ = sl 1, K2tog, pssso

**NOTE 1** – Care must be taken when shaping in this patt. Do not work a ‘K2tog’, ‘sl 1, K1, pssso’ or ‘sl 1, K2tog, pssso’ unless the corresponding ‘yfws’ can be worked and vice versa.

**NOTE 2** – When working from Graph, read odd numbered rows (right side rows) from right to left and even numbered rows (wrong side rows) from left to right.

**NOTE 3** – For each row, beg at appropriate edge for size being knitted and work to beg of rep, work rep until the number of sts after rep for selected size rem on left-hand needle, then work these sts as indicated on Graph.



Level 7  
 409 St Kilda Road  
 MELBOURNE VICTORIA 3004  
 A.B.N 85 055 366 590

T +61 3 9380 3888  
 F +61 3 9820 0989  
 www.patonsyarns.com.au



07/13 – W393

We have made every effort to ensure that these instructions are accurate and complete. We cannot be responsible for variations in individual work, human error or if yarn other than the recommended Patons yarn is used. This publication is protected by copyright. Patons Zhivago is a trade mark of Australian Country Spinners Pty Ltd.

**Assistline**  
 (Melbourne, Australia.)  
 +61 3 9380 3888

**Toll Free**  
 (Within Australia:  
 Outside Melbourne.)  
 1800 333 642