

# CARDIGAN WITH SET-IN SLEEVES

■■■ Easy Plus

MEASUREMENTS		XS	S	M	L	XL
To Fit Bust	cm	70	80	90	100	110
Actual Size	cm	76	86	96	106	116
Length	cm	58	59	60	61	62
Sleeve Length	cm	47	47	47	47	47

## PATONS CLASSIC BLUEBELL 5 PLY 50g balls

Quantity (colour 4319)      9    10    11    12    13

Use only the yarn specified. Other yarns are likely to produce different results.

Quantities are approximate as they can vary between knitters. Check the ball bands to ensure all yarn is from the same dye lot.

## NEEDLES AND EXTRAS

- 1 pair each 3.75mm (UK 9) and 3.00mm (UK 11) knitting needles or size needed to give correct tension.
- 2 large safety pins.
- 1 stitch-holder.
- 7 buttons.
- wool needle for sewing seams.

## TENSION

26 sts and 35 rows to 10cm over stocking st, using 3.75mm needles.

To work a tension square, using 3.75mm needles, cast on 39 sts. Work 54 rows stocking st. Cast off loosely.

Check your tension carefully.

If less sts to 10cm use smaller needles, if more sts use bigger needles.

With correct yarn and tension, your garment will look like our photograph.

For abbreviations and more on knitting techniques, please see [www.patonsyarns.com.au](http://www.patonsyarns.com.au)

## BACK

Using 3.00mm needles, cast on **101** (115-**127**-141-**153**) sts.

**1st row** – K2, \* P1, K1, rep from \* to last st, K1.

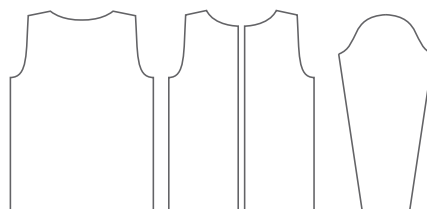
**2nd row** – K1, \* P1, K1, rep from \* to end.

Last 2 rows form rib.

Work a further 22 rows rib.

Change to 3.75mm needles.

Work in stocking st until Back measures 38cm from beg, ending with a purl row.



## Shape Armholes –

Cast off **6** (8-**10**-12-**13**) sts at beg of next 2 rows ... **89** (99-**107**-117-**127**) sts.

**1st row** – K3, K2tog, knit to last 5 sts, sl 1, K1, pssso, K3.

**2nd row** – Purl.

Rep last 2 rows until **77** (83-**89**-93-**101**) sts rem, ending with a purl row.

Work **50** (50-**52**-48-**50**) rows without shaping.

## Shape Back Neck –

**Next row** – K**25** (27-**29**-29-**32**), turn.

Cont on these **25** (27-**29**-29-**32**) sts for right side of back neck.

Dec one st at neck edge in every row until **20** (22-**24**-24-**27**) sts rem.

### Shape Shoulder –

Cast off **7** (7-8-8-9) sts at beg of next row and foll alt row.

Work 1 row. Cast off rem **6** (8-8-8-9) sts.

Slip next **27** (29-31-35-37) sts onto stitch-holder and leave.

With right side facing, join yarn to rem **25** (27-29-29-32) sts and knit to end.

Cont on these **25** (27-29-29-32) sts for left side of back neck.

Dec one st at neck edge in every row until **20** (22-24-24-27) sts rem.

Work 1 row.

### Shape Shoulder –

Cast off **7** (7-8-8-9) sts at beg of next row and foll alt row.

Work 1 row. Cast off rem **6** (8-8-8-9) sts.

## LEFT FRONT

Using 3.00mm needles, cast on **61** (67-73-81-87) sts.

Work 23 rows rib as given for Back.

**24th row** – Rib 14, slip these 14 sts onto a safety pin and leave for Left Front Band, cast on one st (seam st), rib to end ... **48** (54-60-68-74) sts.

Change to 3.75mm needles.

Work in stocking st until Left Front measures same as Back to beg of armholes, ending with a purl row.

### Shape Armhole –

Cast off **6** (8-10-12-13) sts at beg of next row ... **42** (46-50-56-61) sts.

**Next row** – Purl.

**Next row** – K3, K2tog, knit to end.

Rep last 2 rows until **36** (38-41-44-48) sts rem.

Work **30** (28-28-22-22) rows without shaping.

### Shape Neck –

**Next row** (wrong side) – Cast off **9** (9-10-11-12) sts, purl to end ... **27** (29-31-33-36) sts.

Dec one st at end (neck edge) of next row, then in every foll alt row until **24** (26-28-29-32) sts rem, then in every foll 4th row until **20** (22-24-24-27) sts rem.

Work **5** (7-9-5-7) rows.

### Shape Shoulder –

Cast off **7** (7-8-8-9) sts at beg of next row and foll alt row.

Work 1 row.

Cast off rem **6** (8-8-8-9) sts.

## RIGHT FRONT

Using 3.00mm needles, cast on **61** (67-73-81-87) sts.

Work 6 rows rib as given for Back.

**7th row** – Rib 6, cast off 3 sts, rib to end.

**8th row** – Rib to last 6 sts, **turn**, cast on 3 sts, **turn**, rib 6 ... buttonhole.

Work a further 15 rows rib.

**24th row** – Rib to last 14 sts, slip last 14 sts onto a safety pin and leave for Right Front Band, **turn**, cast on one st (seam st) ... **48** (54-60-68-74) sts.

Change to 3.75mm needles.

Work in stocking st until Right Front measures same as

Back to beg of armholes, ending with a purl row.

Work 1 row.

### Shape Armhole –

Cast off **6** (8-10-12-13) sts at beg of next row ... **42** (46-50-56-61) sts.

**Next row** – Knit to last 5 sts, sl 1, K1, pssso, K3.

**Next row** – Purl.

Rep last 2 rows until **36** (38-41-44-48) sts rem, ending with a purl row.

Work **28** (26-26-20-20) rows without shaping.

### Shape Neck –

**Next row** (right side) – Cast off **9** (9-10-11-12) sts, knit to end ... **27** (29-31-33-36) sts.

Dec one st at beg (neck edge) of every foll alt row until **24** (26-28-29-32) sts rem, then in every foll 4th row until **20** (22-24-24-27) sts rem.

Work **6** (8-10-6-8) rows.

### Shape Shoulder –

Cast off **7** (7-8-8-9) sts at beg of next row and foll alt row.

Work 1 row.

Cast off rem **6** (8-8-8-9) sts.

## SLEEVES

Using 3.00mm needles, cast on **63** (65-67-69-69) sts.

Work 24 rows rib as given for Back.

Change to 3.75mm needles.

Work 8 rows stocking st.

**9th row** – K2, **M1**, knit to last 2 sts, **M1**, K2 ... **65** (67-69-71-71) sts.

Cont in stocking st, inc one st (as before) at each end of every foll **22nd** (16th-10th-8th-6th) row until there are **75** (81-91-99-109) sts.

Cont without shaping until Sleeve measures 47cm (or length desired) from beg, ending with a purl row.

### Shape Top –

Cast off **3** (4-5-6-7) sts at beg of next 2 rows ... **69** (73-81-87-95) sts.

**Next row** – K3, K2tog, knit to last 5 sts, sl 1, K1, pssso, K3. Work 3 rows.

Rep last 4 rows **2** (1-0-0-0) times ... **63** (69-79-85-93) sts.

**Next row** – K3, K2tog, knit to last 5 sts, sl 1, K1, pssso, K3 ... **61** (67-77-83-91) sts.

Dec one st (inside 3 sts as before) at each end of every foll alt row until **31** (31-35-39-45) sts rem.

Work 1 row.

Cast off **4** (4-5-6-7) sts at beg of next 4 rows.

Cast off rem **15** (15-15-15-17) sts.

## LEFT FRONT BAND

Slip 14 sts from Left Front safety pin onto a 3.00mm needle so that right side is facing for first row.

**1st row** – Cast on one st (seam st), rib to end ... 15 sts.

Work **146** (146-**146**-156-**156**) rows rib.

**Next row** – Rib 13, rib 2tog ... 14 sts.

Break off yarn. Leave sts on a spare needle.

## RIGHT FRONT BAND

Slip 14 sts from Right Front safety pin onto a 3.00mm needle so that wrong side is facing for first row.

**1st row** – Cast on one st (seam st), rib to end ... 15 sts.

Work **10** (10-**10**-12-**12**) rows rib.

**Next row** – Rib 6, cast off 3 sts, rib to end.

**Next row** – Rib 6, **turn**, cast on 3 sts, **turn**, rib 6 ... buttonhole.

Work **26** (26-**26**-28-**28**) rows rib.

Rep last **28** (28-**28**-30-**30**) rows 3 times, then buttonhole rows once ... 6 buttonholes.

Work **22** (22-**22**-24-**24**) rows rib.

**Next row** – Rib 13, rib 2tog ... 14 sts.

Leave sts on needle. Do not break off yarn.

## NECKBAND

**NOTE** – We recommend using mattress stitch to sew up your handknit.

Join shoulder seams. Sew front bands in position. With right side facing and using 3.00mm needle holding Right Front Band sts, knit up **39** (41-**43**-45-**47**) sts evenly along right front neck to shoulder, knit up 6 sts evenly along right side of back neck, knit across sts from back stitch-holder, knit up 6 sts evenly along left side of back neck to shoulder, knit up **39** (41-**43**-45-**47**) sts evenly along left front neck, then **rib** across Left Front Band sts ... **145** (151-**157**-165-**171**) sts. Work 3 rows rib as given for Back, beg with a 2nd row.

**4th row** – Rib 6, cast off 3 sts, rib to end.

**5th row** – Rib to last 6 sts, **turn**, cast on 3 sts, **turn**, rib 6 ... 7 buttonholes in all.

Work 6 rows rib.

Cast off loosely in rib.

## TO MAKE UP

If desired, with a slightly damp cloth and warm iron, press lightly on wrong side. Join side and sleeve seams. Sew in sleeves. Sew on buttons.



Level 7  
409 St Kilda Road  
MELBOURNE VICTORIA 3004  
A.B.N 85 055 366 590

T +61 3 9380 3888  
F +61 3 9820 0989  
[www.patonsyarns.com.au](http://www.patonsyarns.com.au)

/auspinners

07/13 – W405

We have made every effort to ensure that these instructions are accurate and complete. We cannot be responsible for variations in individual work, human error or if yarn other than the recommended Patons yarn is used. This publication is protected by copyright. Patons Bluebell is a trade mark of Australian Country Spinners Pty Ltd.

**Assistline**  
(Melbourne, Australia.)  
+61 3 9380 3888

**Toll Free**  
(Within Australia:  
Outside Melbourne.)  
1800 333 642