

# #iknitforeddie beanie

Easy Knitting

MEASUREMENTS		2-5 yrs	6-10 yrs	Woman	Man
To Fit Head (approx)	cm	52	54	56	58
	ins	20	21	22	23

## CLECKHEATON COUNTRY ARAN 10 PLY 50g balls

Main Colour

(M – 4001 Cream) 2 2 2 2

Contrast Colour

(C – 4011 Red) 1 1 1 1

Use only the yarn specified. Other yarns are likely to produce different results. Quantities are approximate as they can vary between knitters.

Check the ball bands to ensure all cream yarn is from the same dye lot.

## NEEDLES AND EXTRAS

- 1 pair each 5mm (UK 6, US 8) and 4mm (UK 8, US 6) knitting needles or size needed to give correct tension.
- pom pom maker or piece of cardboard.
- wool needle for sewing seam and embroidery.

## TENSION

This beanie has been designed at a tension of 19 sts and 25 rows to 10cm/4" over stocking st, using 5mm needles.

To work a tension square, using 5mm needles, cast on 28 sts.

Work 38 rows stocking st. Cast off loosely.

Check your tension carefully.

If less sts to 10cm use smaller needles, if more sts use larger needles.

**TIP** For more information on knitting techniques, please see [cleckheaton.com.au](http://cleckheaton.com.au)

## ABBREVIATIONS

**alt** = alternate; **beg** = begin, beginning; **cont** = continue; **dec** = decrease, decreasing; **fol** = follows, following; **K** = knit; **P** = purl; **rem** = remain, remaining; **rep** = repeat; **st, sts** = stitch, stitches; **stocking st** = knit right side rows, purl wrong side rows; **tog** = together.

## BEANIE

Using 4mm needles and **M**, cast on **90** (94-98-102) sts.

**1st row** – K2, \* P2, K2, rep from \* to end.

**2nd row** – P2, \* K2, P2, rep from \* to end.

Rep last 2 rows 7 times, 16 rows rib in all.

Change to 5mm needles.

Work in stocking st, beg with a knit row, until Beanie measures **17** (18-19-19) cm [**6½** (7-7½-7½")] from beg, ending with a purl row.



## SHAPE CROWN –

**1st row** – K5 (4-3-2), \* K3tog, K14 (15-16-17), rep from \* to end ...  
80 (84-88-92) sts.

Work 1 row.

**3rd row** – K5 (4-3-2), \* K3tog, K12 (13-14-15), rep from \* to end ...  
70 (74-78-82) sts.

Work 1 row.

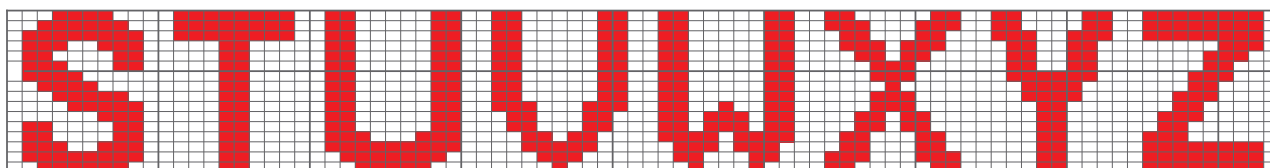
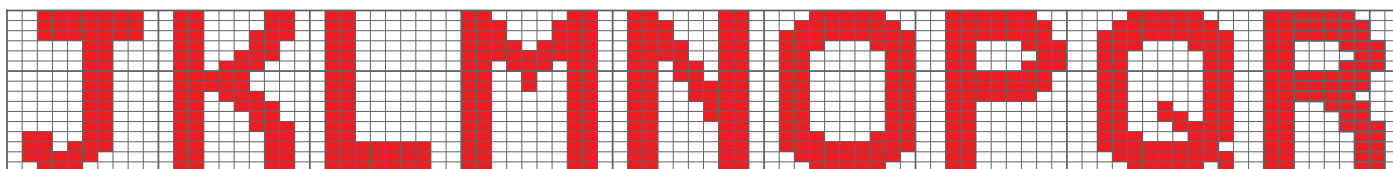
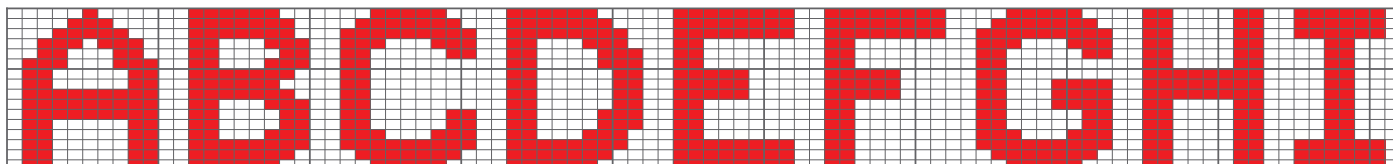
**5th row** – K5 (4-3-2), \* K3tog, K10 (11-12-13), rep from \* to end ...  
60 (64-68-72) sts.

Cont dec in this manner (working 2 sts less between dec) in every foll alt row until **20** (14-18-22) sts rem.

Break off yarn, thread end through rem sts, draw up tightly and fasten off securely.

## TO MAKE UP

**NOTE** – We recommend using mattress stitch to sew up your beanie. DO NOT PRESS. Using **C** and knitting stitch embroidery, beginning 2 rows above rib, work chosen letter from Graph on front of beanie as pictured. Join side edges to form back seam. Sew in ends. Using **C** and large pom pom maker or 2 pieces of cardboard 12cm/5" in diameter with a 4cm/1.5" hole in centre, make a pom pom and attach securely to crown.



## KEY

□ = one stitch (background colour **M**)

■ = embroidered stitch (contrast colour **C**)

## KNITTING STITCH EMBROIDERY

1. Working from right to left, bring the needle out in the centre of the stitch and take it up and around the head of the stitch from right to left (under the stitch above) as shown.
2. Take the needle back through the centre of the original stitch and out through the centre of the stitch on the left.
3. When working from left to right, bring the needle out in the centre of the stitch and take it up and around the head of the stitch from left to right (instead of from right to left).



## CONTACT US

Level 7, 409 St Kilda Road, Melbourne, VIC 3004  
A.B.N 85 055 366 590

T +61 3 9380 3888

F +61 3 9820 0989

[cleckheaton.com.au](http://cleckheaton.com.au)

[f /auspinners](https://www.facebook.com/auspinners)

[@auspinners](https://www.instagram.com/auspinners)

## HELPLINE

**For Australian residents** – If you are using the recommended yarn and need help with your pattern, please phone 03 9380 3888 or Toll Free 1800 337 032 (9am to 4pm Mon to Fri E.S.T.).

If you live outside Australia, please see our postal address and website details.

*Stuck?  
We're here  
to help!*

We have made every effort to ensure that these instructions are accurate and complete. We cannot be responsible for variations in individual work, human error or if yarn other than the recommended Cleckheaton yarn is used. This publication is protected by copyright. Cleckheaton Country Aran 10 ply is a trade mark of Australian Country Spinners Pty Ltd. Yarn colours shown may vary slightly due to the printing process.