

PONCHO JUMPER

MEASUREMENTS

		S-M	L-XL
To Fit Bust	cm	80-90	100-110
Actual Size	cm	126	136
Length (approx)	cm	60	64
Sleeve Length	cm	12	12

MATERIALS

CLECKHEATON MERINO ANGORA SILK 8 PLY 50g balls

Quantity (0003 Bark) 9 10

Use only the yarn specified. Other yarns are likely to produce different results.

Quantities are approximate as they can vary between knitters. Check the ball bands to ensure all yarn is from the same dye lot.

Note – We recommend washing your handknit prior to wear to enhance the natural softness and texture. See ball band for care instructions.

- 1 pair 4.00mm (UK 8) knitting needles, a 4.00mm **circular** knitting needle and a **set** of 4.00mm **double-pointed** knitting needles or size needed to give correct tension.
- 1 stitch-holder.
- wool needle and plain yarn for sewing seams.

TENSION

This Poncho has been designed at a tension of 22 sts and 30 rows to 10cm over stocking st, using 4.00mm needles. To work a tension square, using 4.00mm needles, cast on 33 sts. Work 44 rows stocking st. Cast off loosely. Check your tension carefully. If less sts to 10cm use smaller needles, if more sts use bigger needles.

For abbreviations and more information on knitting techniques, please see our website.

BACK

Using 4.00mm needles, cast on **142** (150) sts.

Note – Due to the tweedy colour mix of this woollen spun yarn, in this design we recommend working from 2 balls of yarn to ensure an even mix of colour tones. Work 2 rows from first ball and leave attached to work, join second ball, work 2 rows and leave attached to work, then work another 2 rows from the first ball. Continue alternating from each ball for the length of each piece. Carry yarn loosely along side edge of work, taking care not to pull too firmly.

1st row – K2, * P2, K2, rep from * to end.

2nd row – P2, * K2, P2, rep from * to end.

Last 2 rows form rib.

Cont in rib until band measures 11cm from beg, ending with a 2nd row.

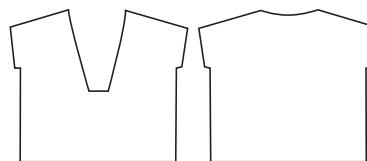
Next row – Cast on one st (seam st), rib to end.

Next row – Cast on one st (seam st), rib to end, dec **3** (1) sts evenly across ... **141** (151) sts.

Cont in stocking st until Back measures **31** (34) cm from beg, ending with a purl row.



 Intermediate



Tie a coloured thread at each end of last row to indicate position for beg of neck when working Front. ******

Work a further 38 rows.

Shape For Sleeves –

Cast on 9 sts at beg of next 2 rows ... **159** (169) sts.

Work **44** (48) rows.

Shape Shoulders and Back Neck –

Next row – Cast off **13** (14) sts, K**58** (60), *incl st rem on right-hand needle after casting on*, **turn**.

Cont on these **58** (60) sts for right side of back neck.

1st row – Cast off 6 sts, purl to end.

2nd row – Cast off **13** (14) sts, knit to last 2 sts, K2tog.

3rd row – As 1st row.

4th row – Cast off 13 sts, knit to last 2 sts, K2tog.

5th row – As 1st row.

Cast off rem **12** (13) sts.

Slip next **17** (21) sts onto stitch-holder and leave for neckband.

With right side facing, join yarn to rem **71** (74) sts for left side of back neck, knit to end.

1st row – Cast off **13** (14) sts, purl to last 2 sts, P2tog.

2nd row – Cast off 6 sts, knit to end.

3rd row – As 1st row.

4th row – As 2nd row.

5th row – Cast off 13 sts, purl to end.

6th row – As 2nd row.

Cast off rem **12** (13) sts.

FRONT

Work as for Back to **.

Divide for Neck –

Next row – K62 (67), cast off next 17 sts, knit to end.

Cont on these 62 (67) sts for right side of neck.

Dec one st at neck edge in every foll alt row until 60 (63) sts rem, then in every foll 4th row until 52 (56) sts rem.

Work 2 rows.

Shape For Sleeve –

Next row (wrong side) – Cast on 9 sts, purl to end ...

61 (65) sts.

Dec one st at neck edge in next row, then in every foll

4th row until 55 (58) sts rem, then in every foll 6th row until

51 (54) sts rem.

Shape Shoulder –

Next row (wrong side) – Cast off 13 (14) sts, purl to end.

Work 1 row.

Rep last 2 rows once.

Next row – Cast off 13 sts, purl to end.

Work 1 row.

Cast off rem 12 (13) sts.

With wrong side facing, join yarn to rem 62 (67) sts and purl to end.

Cont on these 62 (67) sts for left side of neck.

Dec one st at neck edge in next row, then in every foll

alt row until 60 (63) sts rem, then in every foll 4th row

until 52 (56) sts rem.

Work 1 row.

Shape For Sleeve –

Next row (right side) – Cast on 9 sts, knit to end ...

61 (65) sts.

Work 1 row.

Dec one st at neck edge in next row, then in every foll

4th row until 55 (58) sts rem, then in every foll 6th row

until 52 (55) sts rem.

Work 5 rows.

Shape Shoulder –

Next row – Cast off 13 (14) sts, knit to last 2 sts, K2tog.

Work 1 row.

Next row – Cast off 13 (14) sts, knit to end.

Work 1 row.

Next row – Cast off 13 sts, knit to end.

Work 1 row.

Cast off rem 12 (13) sts.

NECKBAND

Note – We recommend using mattress stitch and plain yarn to sew up your handknit.

Join shoulder seams. With right side facing, using 4.00mm

circular needle and beg at right side of centre front neck

cast off, knit up 63 sts evenly along right side of front

neck, knit up 16 sts evenly along right side of back neck,

knit across sts from back stitch-holder – dec one st in

centre, knit up 16 sts evenly along left side of back neck,

then knit up 63 sts evenly along left side of front neck

(omitting centre cast-off sts) ... 174 (178) sts.

Note – Work backwards and forwards in rows.

1st row – * P2, K2, rep from * to last 2 sts, P2.

2nd row – Inc in first st, K1, * P2, K2, rep from * to last 4 sts,

P2, K1, inc in last st ... 176 (180) sts.

Keeping rib patt correct and working extra sts into rib,

inc one st at each end of every foll 4th row until there are

186 (190) sts.

Work 1 row.

Cast off loosely in rib.

SLEEVE BANDS

Join side and sleeve seams from seam stitch cast-on

(to allow for side splits) to end of sleeve cast-on. With

right side facing, using **set** of 4.00mm **double-pointed**

needles and beg at underarm seam, knit up 64 (72) sts

evenly around sleeve opening.

1st round – * K2, P2, rep from * to end.

Rep last round until band measures 8cm from beg.

Cast off loosely in rib.

SIDE SPLIT EDGINGS

With right side facing and using 4.00mm needles, knit up

54 sts evenly around one side split (both edges).

Knit 1 row.

Cast off knitways.

Rep on other side split.

TO MAKE UP

DO NOT PRESS. Sew right end of neckband in position

to centre front cast-off. Slip-stitch left end of neckband in

position underneath.

Cleckheaton

Level 7

409 St Kilda Road

MELBOURNE VICTORIA 3004

A.B.N 85 055 366 590

T +61 3 9380 3888

F +61 3 9820 0989

www.cleckheaton.com.au

 /auspinners



hotline

For Australian residents – If you need help with your pattern, and are using the recommended Cleckheaton yarn, please phone 03 9380 3888 or Toll Free 1800 337 032, (9am to 4pm Mon – Fri E.S.T.).

If you live outside Australia please see our postal address and website opposite.

This publication is protected by copyright. Reproduction in any form (including photocopying) without prior permission from Australian Country Spinners will lead to proceedings being brought to restrain any infringement. The only exception is photocopying to enlarge graphs and written instructions for graphs. We have made every effort to ensure that these instructions are accurate and complete. We cannot however be responsible for variations in individual work, human error, typographical mistakes or if yarn other than the recommended CLECKHEATON yarn is used.