

Funnel Neck Cable Vest

 Intermediate
Knitting

MEASUREMENTS		XS	S	M	L	XL
To Fit Bust	cm	70	70-80	85-90	95-100	105-110
Actual Size	cm	88	96	104	112	120
Length	cm	62	63	64	65	66

MATERIALS

CLECKHEATON COUNTRY 8 PLY 50g balls

Quantity	XS	S	M	L	XL
	13	14	15	16	17

Use only the yarn specified. Other yarns are likely to produce different results. Quantities are approximate as they can vary between knitters. Check the ball bands to ensure all yarn is from the same dye lot.

NEEDLES AND EXTRAS

- 1 **pair** each 3.25mm and 4.00mm knitting needles and a **set** of 3.25mm **double-pointed** knitting needles or size needed to give correct tension.
- cable needle.
- 2 stitch-holders.
- wool needle for sewing seams.

TENSION

This handknit has been designed at a tension of 30 sts and 33 rows to 10cm over patt, using 4.00mm needles.

For abbreviations and more information on knitting techniques, please see cleckheaton.com.au

SPECIAL ABBREVIATIONS

C4B = Slip next 2 sts onto cable needle and leave at back of work, K2, then K2 from cable needle.

C4F = Slip next 2 sts onto cable needle and leave at front of work, K2, then K2 from cable needle.

BACK

Using a **pair** of 3.25mm needles, cast on **107** (117-127-137-147) sts.

1st Row: K2, * P1, K1, rep from * to last st, K1.

2nd Row: K1, * P1, K1, rep from * to end.

Last 2 rows form rib. Work a further 13 rows rib.

16th Row: Rib **10** (10-8-8-6), * inc in next st, rib 5, rep from * to last **7** (5-5-3-3) sts, rib **7** (5-5-3-3) ... **122** (134-146-158-170) sts.

Change to a **pair** of 4.00mm needles and **beg Cable Patt.**

1st Row: Knit.

2nd and Foll Alt Rows: Purl.

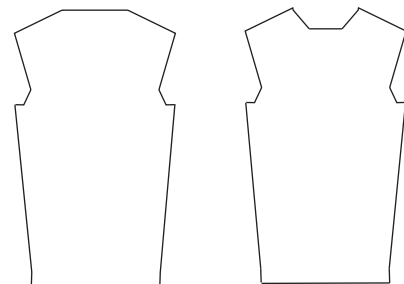
3rd Row: K1, * **C4B**, K4, **C4F**, rep from * to last st, K1.

5th Row: Knit.

7th Row: K3, **C4F**, **C4B**, * K4, **C4F**, **C4B**, rep from * to last 3 sts, K3.

8th Row: Purl.

Last 8 rows form Cable patt.



Beg Inc for Sides:

Cont in patt and working extra sts into patt as they become available, inc one st at each end of next and foll 8th rows until there are **134** (146-158-170-182) sts.

Cont (without further inc) until work measures 34cm from beg, working last row on wrong side.

Shape Armholes:

Keeping patt correct, cast off **4** (6-7-9-10) sts at beg of next 2 rows ... **126** (134-144-152-162) sts.

Dec one st at each end of next row, then in every foll alt row **0** (1-2-4-6) times, then in every foll 4th row **3** (4-4-4-3) times ... **118** (122-130-134-142) sts.

Work **33** (27-27-27-27) rows patt (without further dec).

Working extra sts into patt as they become available, inc one st at each end of next row, then in every foll 4th row **3** (4-4-4-5) times, then in foll alt rows twice ... **130** (136-144-148-158) sts.

Work 1 row patt. **

Shape Shoulders:

Keeping patt correct, cast off 2 sts at beg of next **26** (26-24-24-16) rows, **Sizes M, L and XL only** - then 3 sts at beg of foll (2-2-10) rows.

All Sizes ... 78 (84-90-94-96) sts.

Shape Back Neck:

NOTE: When instructions read – ‘Cast off 2 sts, K5’ (or another number), the st left on the right-hand needle after casting off counts as one st.

1st Row: Cast off 2 (2-3-3-3) sts, patt **12** (13-14-14-14), **turn**.

Cont on these **12** (13-14-14-14) sts for right side of back neck.

2nd Row: Patt 2tog, patt to end.

3rd Row: Cast off 2 (2-3-3-3) sts, patt to last 2 sts, patt 2tog.

4th Row: As 2nd row.

5th Row: Cast off 2 (3-3-3-3) sts, patt to last 2 sts, patt 2tog.

6th Row: As 2nd row ... 3 sts.

Cast off rem sts.

Slip next **50** (54-56-60-62) sts onto a stitch-holder and leave for Funnel Collar.

With right side facing, join yarn to rem **14** (15-17-17-17) sts for left side of back neck and patt to end.

1st Row: Cast off 2 (2-3-3-3) sts, patt to last 2 sts, patt 2tog.

2nd Row: Patt 2tog, patt to end.

Rep last 2 rows once.

5th Row: Cast off 2 (3-3-3-3) sts, patt to last 2 sts, patt 2tog ... 3 sts.

6th Row: Patt to end.

Cast off rem sts.

FRONT

Work as given for Back to **.

Shape Shoulders:

Keeping patt correct, cast off 2 sts at beg of next **10** (8-6-4-2) rows ... **110** (120-132-140-154) sts.

Shape Neck:

1st Row: Cast off 2 sts, patt **41** (45-51-54-61), **turn**.

Cont on these **41** (45-51-54-61) sts for left side of neck.

2nd Row: Cast off 4 sts, patt to end.

3rd Row: Cast off 2 sts, patt to last 2 sts, patt 2tog.

4th Row: Cast off 3 sts, patt to end.

5th Row: As 3rd row.

6th Row: Cast off 2 sts, patt to end.

7th Row: Cast off 2 sts, patt to last 2 sts, patt 2tog.

8th Row: Patt to end.

Rep last 2 rows **5** (6-5-6-3) times ... **8** (9-18-18-34) sts.

Sizes M, L and XL only –

Next Row: Cast off 3 sts, patt to last 2 sts, patt 2tog.

Next Row: Patt to end.

Rep last 2 rows (1-1-5) times ... 10 sts.

All Sizes ... 8 (9-10-10-10) sts.

Next Row: Cast off 2 (2-3-3-3) sts, patt to end.

Next Row: Patt to end.

Next Row: Cast off 2 (3-3-3-3) sts, patt to last 2 sts, patt 2tog ... 3 sts.

Next Row: Patt to end.

Cast off rem sts.

Slip next **24** (26-26-28-28) sts onto a stitch-holder and leave for Funnel Collar.

With right side facing, join yarn to rem **43** (47-53-56-63) sts for right side of neck and patt to end.

1st Row: Cast off 2 sts, patt to last 2 sts, patt 2tog.

2nd Row: Cast off 4 sts, patt to end.

3rd Row: As 1st row.

4th Row: Cast off 3 sts, patt to end.

5th Row: As 1st row.

6th Row: Cast off 2 sts, patt to end.

7th Row: Cast off 2 sts, patt to end.

8th Row: Patt 2tog, patt to end.

Rep last 2 rows **4** (5-5-6-3) times ... **10** (11-17-17-33) sts.

Sizes M, L and XL only –

Next Row: Cast off 3 sts, patt to end.

Next Row: Patt 2tog, patt to end.

Rep last 2 rows (0-0-4) times ... 13 sts.

All Sizes ... 10 (11-13-13-13) sts.

Next Row: Cast off 2 (2-3-3-3) sts, patt to end.

Next Row: Patt to end.

Next Row: Cast off 2 (2-3-3-3) sts, patt to end.

Next Row: Patt 2tog, patt to end.

Next Row: Cast off 2 (3-3-3-3) sts, patt to end ... 3 sts.

Next Row: Patt to end.

Cast off rem sts.

FUNNEL COLLAR

NOTE: We recommend using mattress stitch to sew up your handknit.

Join shoulder seams. With right side facing, using **set** of 3.25mm **double-pointed** needles and beg at left shoulder seam, knit up **20** (22-24-26-28) sts evenly along left front neck shaping, knit across sts from front stitch-holder – dec 7 sts evenly across, knit up **20** (22-24-26-28) sts evenly along right front neck shaping, knit up 6 sts evenly along right back neck shaping, knit across sts from back stitch-holder – dec **13** (15-15-17-17) sts evenly across, then knit up 6 sts evenly along left back neck shaping ... **106** (114-120-128-134) sts.

1st Round: * K1, P1, rep from * to end.

Rep 1st round until collar measures 12cm from beg.

Cast off loosely in rib.

ARMHOLE BANDS

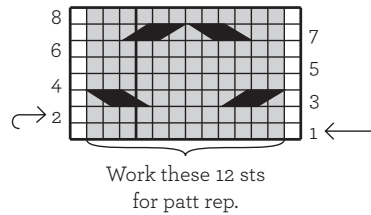
With right side facing and using a **pair** of 3.25mm needles, knit up **97** (105-111-119-125) sts evenly along armhole edge.

Work 11 rows rib as given for Back, beg with a 2nd row.

Cast off in rib.

TO MAKE UP

Join side and armhole band seams.



KEY - Shaded area represents stitch repeat.

□ = Knit st on right side, purl st on wrong side.

▬▬▬ = **C4F** - Slip next 2 sts onto cable needle and leave at front of work, K2, then K2 from cable needle.

▬▬▬ = **C4B** - Slip next 2 sts onto cable needle and leave at back of work, K2, then K2 from cable needle.

Note 1: When working from Graph, read odd numbered rows (right side rows) from right to left and even numbered rows (wrong side rows) from left to right.

Note 2: For each row, beg at appropriate edge and work to beg of rep, work rep until the number of sts after rep rem on left-hand needle, then work these sts as indicated on Graph.

Cleckheaton

Level 7, 409 St Kilda Road, Melbourne, VIC 3004

A.B.N 85 055 366 590

T +61 3 9380 3888 **F** +61 3 9820 0989

cleckheaton.com.au



HOTLINE

For Australian residents – If you need help with your pattern, and are using the recommended Cleckheaton yarn, please phone 03 9380 3888 or Toll Free 1800 337 032, (9am to 4pm Mon - Fri E.S.T.) If you live outside Australia, please see our postal address and website details.

This publication is protected by copyright. Reproduction in any form (including photocopying) without prior permission from Australian Country Spinners will lead to proceedings being brought to restrain any infringement. We have made every effort to ensure that these instructions are accurate and complete. We cannot however be responsible for variations in individual work, human error, typographical mistakes or if yarn other than the recommended CLECKHEATON yarn is used. Yarn colours shown may vary slightly due to the printing process.