

THROW & CUSHION

Measurements

Throw (approx)	155 x 100cm
Cushion (approx)	40 x 40cm

Materials

Panda Magnum 8ply 100g balls

Throw	8
Cushion	2

or Panda Magnum Soft 8ply 100g balls

Throw	14
Cushion	4

Use only the yarn specified. Other yarns are likely to produce different results. Quantities are approximate as they can vary between knitters. Check the ball bands to ensure all yarn is from the same dye lot.

- 1 pair 4.00mm (UK 8) knitting needles (for cushion) and a 4.00mm **circular** knitting needle (for throw) or size needed to give correct tension.
- cable needle.
- 40cm cushion insert.
- wool needle for sewing cushion seams.

Tension

24 sts and 31 rows to 10cm over double moss st patt, using 4.00mm needles.

For abbreviations and more information on knitting techniques, please see pandayarns.com.au

Special Abbreviation

C7F = slip next 4 sts onto a cable needle and leave at front of work, K3, then K4 from cable needle.

THROW

Note – When joining new balls of yarn while making throw, start each new ball at the inside edge of the 5 st border, not at the end of the row.

****** Using 4.00mm **circular** needle, cast on 7 sts.

Work 24 rows stocking st, working last row on wrong side.

Break off yarn and leaving sts on needle, rep from ****** 7 times ... 8 ties.

With wrong side facing, cast on 27 sts, **turn**, knit across the 7 sts from first tie, * **turn**, cast on 19 sts, **turn**, knit across next 7 st tie, rep from * until last 7 st tie has been worked, **turn**, cast on 27 sts ... 243 sts.

Next Row (wrong side): P3, K2, purl to last 5 sts, K2, P3.

Work rows 1 to 56 incl from graph or written instructions 8 times in all, then rep rows 1 to 38 incl once.



Note – When instructions read 'Cast off 5 sts, K5' (or other numbers), the st rem on right-hand needle after casting off counts as first st of next section.

Next Row: Cast off 14 sts knitways, K7, * cast off 19 sts, K7, rep from * until 14 sts rem, cast off rem sts.

****** Rejoin yarn to 7 st tie on left-hand needle and work 24 rows stocking st, beg with a purl row, then cast off. Rep from ****** until all ties have been worked ... 9 ties.

To Make Up

Sew in all ends. Knot each 7 st tie (9 at top and 8 at bottom of throw).

Written Instructions For Throw

Row 1: K3, P2, K3, P1, K17, P1, * **C7F**, P1, K17, P1, rep from * to last 8 sts, K3, P2, K3.

Row 2: P3, K2, P3, * K1, P17, K1, P7, rep from * to last 27 sts, K1, P17, K1, P3, K2, P3.

Row 3: K3, P2, K3, P19, * K7, P19, rep from * to last 8 sts, K3, P2, K3.

Row 4: P3, K2, P3, * K19, P7, rep from * to last 27 sts, K19, P3, K2, P3.

Row 5: K3, P2, K3, P1, K17, P1, * K7, P1, K17, P1, rep from * to last 8 sts, K3, P2, K3.

Row 6: As row 2.

Row 7: As row 3.

Row 8: As row 4.

Row 9: As row 1.

Row 10: As row 2.

Row 11: K3, P2, yon, K2, sl 1, K1, pssso, P17, K2tog, * K2, yrn, P1, yon, K2, sl 1, K1, pssso, P17, K2tog, rep from * to last 7 sts, K2, yrn, P2, K3.

Row 12: P3, K2, P3, * P1, K17, P4, K1, P3, rep from * to last 27 sts, P1, K17, P4, K2, P3.

Row 13: K3, P3, yon, K2, sl 1, K1, pssso, P1, K13, P1, K2tog, K1, * K1, yrn, P1, K1, P1, yon, K2, sl 1, K1, pssso, P1, K13, P1, K2tog, K1, rep from * to last 7 sts, K1, yrn, P3, K3.

Row 14: P3, K3, P2, * P2, K1, P13, K1, P4, (K1, P1) twice, P1, rep from * to last 27 sts, P2, K1, P13, K1, P4, K3, P3.

Row 15: K3, P2, K1, P1, yon, K2, sl 1, K1, pssso, P13, K2tog, K2, * yrn, (P1, K1) twice, P1, yon, K2, sl 1, K1, pssso, P13, K2tog, K2, rep from * to last 7 sts, yrn, P1, K1, P2, K3.

Row 16: P3, K2, P1, K1, P1, * P3, K13, P4, (K1, P1) 3 times, rep from * to last 27 sts, P3, K13, P4, K1, P1, K2, P3.

Row 17: K3, P3, K1, P1, yon, K2, sl 1, K1, pssso, P1, K9, P1, K2tog, K2, yrn, * (P1, K1) 3 times, P1, yon, K2, sl 1, K1, pssso, P1, K9, P1, K2tog, K2, yrn, rep from * to last 8 sts, P1, K1, P3, K3.

Row 18: P3, K3, P1, K1, * P4, K1, P9, K1, P4, (K1, P1) 3 times, K1, rep from * to last 27 sts, P4, K1, P9, K1, P4, K1, P1, K3, P3.

Row 19: K3, P2, (K1, P1) twice, yon, K2, sl 1, K1, pssso, P9, K2tog, K2, yrn, P1, * (K1, P1) 4 times, yon, K2, sl 1, K1, pssso, P9, K2tog, K2, yrn, P1, rep from * to last 8 sts, K1, P1, K1, P2, K3.

Row 20: P3, K2, P1, K1, P1, * K1, P4, K9, P4, (K1, P1) 4 times, rep from * to last 27 sts, K1, P4, K9, P4, (K1, P1) twice, K2, P3.

Row 21: K3, P3, (K1, P1) twice, yon, K2, sl 1, K1, pssso, P1, K5, P1, K2tog, K2, yrn, P1, K1, * (P1, K1) 4 times, P1, yon, K2, sl 1, K1, pssso, P1, K5, P1, K2tog, K2, yrn, P1, K1, rep from * to last 8 sts, P1, K1, P3, K3.

Row 22: P3, K3, P1, K1, * P1, K1, P4, K1, P5, K1, P4, (K1, P1) 4 times, K1, rep from * to last 27 sts, P1, K1, P4, K1, P5, K1, P4, (K1, P1) twice, K3, P3.

Row 23: K3, P2, (K1, P1) 3 times, yon, K2, sl 1, K1, pssso, P5, K2tog, K2, yrn, P1, K1, P1, * (K1, P1) 5 times, yon, K2, sl 1, K1, pssso, P5, K2tog, K2, yrn, P1, K1, P1, rep from * to last 8 sts, K1, P1, K1, P2, K3.

Row 24: P3, K2, P1, K1, P1, * K1, P1, K1, P4, K5, P4, (K1, P1) 5 times, rep from * to last 27 sts, K1, P1, K1, P4, K5, P4, (K1, P1) 3 times, K2, P3.

Row 25: K3, P3, (K1, P1) 3 times, yon, K2, sl 1, K1, pssso, P1, K1, P1, K2tog, K2, yrn, (P1, K1) twice, * (P1, K1) 5 times, P1, yon, K2, sl 1, K1, pssso, P1, K1, P1, K2tog, K2, yrn, (P1, K1) twice, rep from * to last 8 sts, P1, K1, P3, K3.

Row 26: P3, K3, P1, K1, * (P1, K1) twice, P4, K1, P1, K1, P4, (K1, P1) 5 times, K1, rep from * to last 27 sts, (P1, K1) twice, P4, K1, P1, K1, P4, (K1, P1) 3 times, K3, P3.

Row 27: K3, P2, (K1, P1) 4 times, yon, K2, sl 1, K1, pssso, P1, K2tog, K2, yrn, (P1, K1) twice, P1, * (K1, P1) 6 times, yon, K2, sl 1, K1, pssso, P1, K2tog, K2, yrn, (P1, K1) twice, P1, rep from * to last 8 sts, K1, P1, K1, P2, K3.

Row 28: P3, K2, P1, K1, P1, * (K1, P1) 3 times, P3, K1, P4, (K1, P1) 6 times, rep from * to last 27 sts, (K1, P1) 3 times, P3, K1, P4, (K1, P1) 4 times, K2, P3.

Row 29: K3, P3, (K1, P1) 4 times, **C7F**, (P1, K1) 3 times, * (P1, K1) 6 times, P1, **C7F**, (P1, K1) 3 times, rep from * to last 8 sts, P1, K1, P3, K3.

Row 30: P3, K3, P1, K1, * (P1, K1) 3 times, P7, (K1, P1) 6 times, K1, rep from * to last 27 sts, (P1, K1) 3 times, P7, (K1, P1) 4 times, K3, P3.

Row 31: K3, P2, (K1, P1) 4 times, P1, K7, P2, (K1, P1) twice, * (K1, P1) 6 times, P1, K7, P2, (K1, P1) twice, rep from * to last 8 sts, K1, P1, K1, P2, K3.

Row 32: P3, K2, P1, K1, P1, * (K1, P1) twice, K2, P7, K1, (K1, P1) 6 times, rep from * to last 27 sts, (K1, P1) twice, K2, P7, K1, (K1, P1) 4 times, K2, P3.

Row 33: K3, P3, (K1, P1) 4 times, K7, (P1, K1) 3 times, * (P1, K1) 6 times, P1, K7, (P1, K1) 3 times, rep from * to last 8 sts, P1, K1, P3, K3.

Row 34: As row 30.

Row 35: As row 31.

Row 36: As row 32.

Row 37: As row 29.

Row 38: As row 30.

Row 39: K3, P2, (K1, P1) 4 times, K2tog, K2, yrn, P1, yon, K2, sl 1, K1, pssso, (P1, K1) twice, P1, * (K1, P1) 6 times, K2tog, K2, yrn, P1, yon, K2, sl 1, K1, pssso, (P1, K1) twice, P1, rep from * to last 8 sts, K1, P1, K1, P2, K3.

Row 40: As row 28.

Row 41: K3, P3, (K1, P1) 3 times, K2tog, K2, yrn, P1, K1, P1, yon, K2, sl 1, K1, pssso, (P1, K1) twice, * (P1, K1) 5 times, P1, K2tog, K2, yrn, P1, K1, P1, yon, K2, sl 1, K1, pssso, (P1, K1) twice, rep from * to last 8 sts, P1, K1, P3, K3.

Row 42: As row 26.

Row 43: K3, P2, (K1, P1) 3 times, K2tog, K2, yrn, P5, yon, K2, sl 1, K1, pssso, P1, K1, P1, * (K1, P1) 5 times, K2tog, K2, yrn, P5, yon, K2, sl 1, K1, pssso, P1, K1, P1, rep from * to last 8 sts, K1, P1, K1, P2, K3.

Row 44: As row 24.

Row 45: K3, P3, (K1, P1) twice, K2tog, K2, yrn, P1, K5, P1, yon, K2, sl 1, K1, pssso, P1, K1, * (P1, K1) 4 times, P1, K2tog, K2, yrn, P1, K5, P1, yon, K2, sl 1, K1, pssso, P1, K1, rep from * to last 8 sts, P1, K1, P3, K3.

Row 46: As row 22.

Row 47: K3, P2, (K1, P1) twice, K2tog, K2, yrn, P9, yon, K2, sl 1, K1, pssso, P1, * (K1, P1) 4 times, K2tog, K2, yrn, P9, yon, K2, sl 1, K1, pssso, P1, rep from * to last 8 sts, K1, P1, K1, P2, K3.

Row 48: As row 20.

Row 49: K3, P3, K1, P1, K2tog, K2, yrn, P1, K9, P1, yon, K2, sl 1, K1, pssso, * (P1, K1) 3 times, P1, K2tog, K2, yrn, P1, K9, P1, yon, K2, sl 1, K1, pssso, rep from * to last 8 sts, P1, K1, P3, K3.

Row 50: As row 18.

Row 51: K3, P2, K1, P1, K2tog, K2, yrn, P13, yon, K2, * sl 1, K1, pssso, (P1, K1) twice, P1, K2tog, K2, yrn, P13, yon, K2, rep from * to last 9 sts, sl 1, K1, pssso, P1, K1, P2, K3.

Row 52: As row 16.

Row 53: K3, P3, K2tog, K2, yrn, P1, K13, P1, yon, K1, * K1, sl 1, K1, pssso, P1, K1, P1, K2tog, K2, yrn, P1, K13, P1, yon, K1, rep from * to last 9 sts, K1, sl 1, K1, pssso, P3, K3.

Row 54: As row 14.

Row 55: K3, P2, K2tog, K2, yrn, P17, * yon, K2, sl 1, K1, pssso, P1, K2tog, K2, yrn, P17, rep from * to last 9 sts, yon, K2, sl 1, K1, pssso, P2, K3.

Row 56: As row 12.

Graph For Throw

KEY - Shaded area represents st repeat.


◻ = Knit st on right side, purl st on wrong side (stocking st).

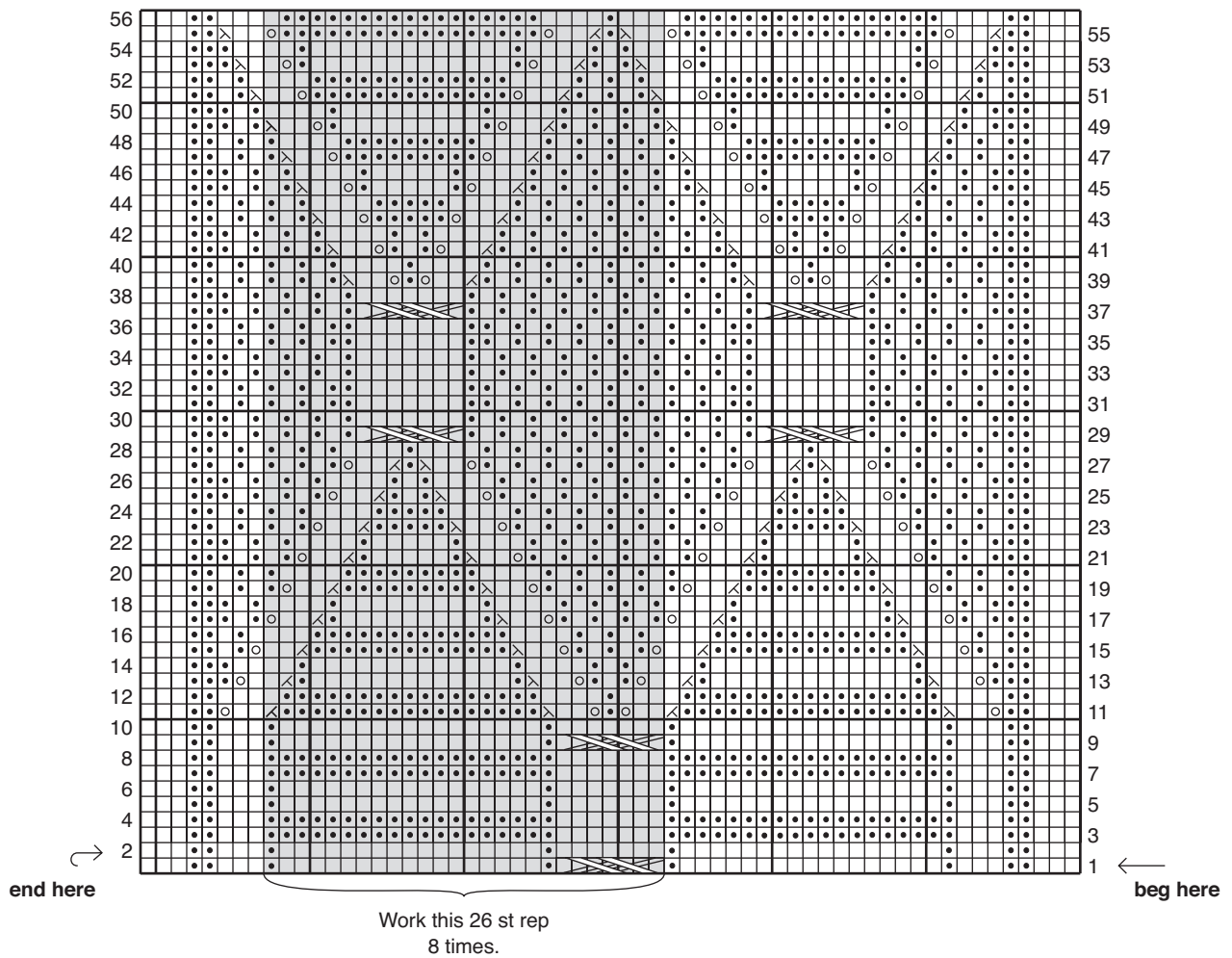
◼ = Purl st on right side, knit st on wrong side.

○ = ◻fwd, ◻on or ◻rn (to make a st).

⊠ = K2tog.

⊡ = Sl 1, K1, pssso.

 = **C7F** - Slip next 4 sts onto cable needle and leave at front of work, K3, then K4 from cable needle.



◻◻◻◻ When working from ◻raph, read odd numbered rows (right side rows) from right to left and even numbered rows (wrong side rows) from left to right.

◻◻◻◻ For each row, beg at edge and work to beg of rep, work rep 8 times, then work rem sts as indicated on ◻raph.

CUSHION

Side (Make 2)

Using 4.00mm needles, cast on 92 sts.

Work rows 1 to 56 incl from graph or written instructions twice, then rep rows 1 to 12 incl once. Cast off.

To Make Up

Note – We recommend using mattress stitch to sew up your cushion.

Sew 3 edges of cushion tog. Insert cushion and join rem edge.

Written Instructions For Cushion

Row 1: K1, K2tog, K2, yrn, P5, * P12, yon, K2, sl 1, K1, pssso, P1, K2tog, K2, yrn, P5, rep from * to last 4 sts, P3, K1.

Row 2: P1, K3, * K5, P4, K1, P4, K12, rep from * to last 10 sts, K5, P5.

Row 3: K4, P1, K5, * K12, P1, **C7F**, P1, K5, rep from * to last 4 sts, K4.

Row 4: P4, * P5, K1, P7, K1, P12, rep from * to last 10 sts, P5, K1, P4.

Row 5: K4, P6, * P13, K7, P6, rep from * to last 4 sts, P3, K1.

Row 6: P1, K3, * K6, P7, K13, rep from * to last 10 sts, K6, P4.

Row 7: K4, P1, K5, * K12, P1, K7, P1, K5, rep from * to last 4 sts, K4.

Row 8: As row 4.

Row 9: As row 5.

Row 10: As row 6.

Row 11: As row 3.

Row 12: As row 4.

Row 13: K1, yfwd, K2, sl 1, K1, pssso, P5, * P12, K2tog, K2, yrn, P1, yon, K2, sl 1, K1, pssso, P5, rep from * to last 4 sts, P3, K1.

Row 14: P1, K3, * K5, P4, K1, P4, K12, rep from * to last 10 sts, K5, P5.

Row 15: K1, P1, yon, K2, sl 1, K1, pssso, P1, K3, * K10, P1, K2tog, K2, yrn, P1, K1, P1, yon, K2, sl 1, K1, pssso, P1, K3, rep from * to last 4 sts, K4.

Row 16: P4, * P3, K1, P4, K1, P1, K1, P4, K1, P10, rep from * to last 10 sts, P3, K1, P4, K1, P1.

Row 17: K2, P1, yon, K2, sl 1, K1, pssso, P3, * P10, K2tog, K2, yrn, (P1, K1) twice, P1, yon, K2, sl 1, K1, pssso, P3, rep from * to last 4 sts, P3, K1.

Row 18: P1, K3, * K3, P4, (K1, P1) 3 times, P3, K10, rep from * to last 10 sts, K3, P4, K1, P2.

Row 19: (K1, P1) twice, yon, K2, sl 1, K1, pssso, P1, K1, * K8, P1, K2tog, K2, yrn, (P1, K1) 3 times, P1, yon, K2, sl 1, K1, pssso, P1, K1, rep from * to last 4 sts, K4.

Row 20: P4, * P1, K1, P4, (K1, P1) 4 times, P3, K1, P8, rep from * to last 10 sts, P1, K1, P4, (K1, P1) twice.

Row 21: K1, (K1, P1) twice, yon, K2, sl 1, K1, pssso, P1, * P8, K2tog, K2, yrn, (P1, K1) 4 times, P1, yon, K2, sl 1, K1, pssso, P1, rep from * to last 4 sts, P3, K1.

Row 22: P1, K3, * K1, P4, (K1, P1) 4 times, K1, P4, K8, rep from * to last 10 sts, K1, P4, (K1, P1) twice, P1.

Row 23: (K1, P1) 3 times, yon, K2, sl 1, K1, pssso, * P1, K5, P1, K2tog, K2, yrn, (P1, K1) 5 times, P1, yon, K2, sl 1, K1, pssso, rep from * to last 4 sts, P1, K3.

Row 24: P3, K1, * P4, (K1, P1) 6 times, P3, K1, P5, K1, rep from * to last 10 sts, P4, (K1, P1) 3 times.

Row 25: K1, (K1, P1) 3 times, yon, K2, * sl 1, K1, pssso, P5, K2tog, K2, yrn, (P1, K1) 6 times, P1, yon, K2, rep from * to last 5 sts, sl 1, K1, pssso, P2, K1.

Row 26: P1, K2, P1, * P3, (K1, P1) 6 times, K1, P4, K5, P1, rep from * to last 10 sts, P3, (K1, P1) 3 times, P1.

Row 27: (K1, P1) 4 times, yon, K1, * K1, sl 1, K1, pssso, P1, K1, P1, K2tog, K2, yrn, (P1, K1) 7 times, P1, yon, K1, rep from * to last 5 sts, K1, sl 1, K1, pssso, P1, K1.

Row 28: P1, K1, P2, * P2, (K1, P1) 8 times, P3, K1, P1, K1, P2, rep from * to last 10 sts, P2, (K1, P1) 4 times.

Row 29: K1, (K1, P1) 4 times, * yon, K2, sl 1, K1, pssso, P1, K2tog, K2, yrn, (P1, K1) 8 times, P1, rep from * to last 5 sts, yon, K2, sl 1, K1, pssso, K1.

Row 30: P4, * (P1, K1) 9 times, P4, K1, P3, rep from * to last 10 sts, (P1, K1) 4 times, P2.

Row 31: (K1, P1) 5 times, * **C7F**, (P1, K1) 9 times, P1, rep from * to last 4 sts, K4.

Row 32: P4, * (K1, P1) 10 times, P6, rep from * to last 10 sts, (K1, P1) 5 times.

Row 33: K1, (K1, P1) 4 times, P1, * K7, P1, (P1, K1) 8 times, P2, rep from * to last 4 sts, K4.

Row 34: P4, * K1, (K1, P1) 8 times, K2, P7, rep from * to last 10 sts, K1, (K1, P1) 4 times, P1.

Row 35: (K1, P1) 5 times, * K7, (P1, K1) 9 times, P1, rep from * to last 4 sts, K4.

Row 36: As row 32.

Row 37: As row 33.

Row 38: As row 34.

Row 39: As row 31.

Row 40: As row 32.

Row 41: K1, (K1, P1) 4 times, K2tog, * K2, yrn, P1, yon, K2, sl 1, K1, pssso, (P1, K1) 8 times, P1, K2tog, rep from * to last 3 sts, K2, yfwd, K1.

Row 42: As row 30.

Row 43: (K1, P1) 4 times, K2tog, K1, * K1, yrn, P1, K1, P1, yon, K2, sl 1, K1, pssso, (P1, K1) 7 times, P1, K2tog, K1, rep from * to last 3 sts, K1, yrn, P1, K1.

Row 44: As row 28.

Row 45: K1, (K1, P1) 3 times, K2tog, K2, * yrn, P5, yon, K2, sl 1, K1, pssso, (P1, K1) 6 times, P1, K2tog, K2, rep from * to last 3 sts, yrn, P2, K1.

Row 46: As row 26.

Row 47: (K1, P1) 3 times, K2tog, K2, * yrn, P1, K5, P1, yon, K2, sl 1, K1, pssso, (P1, K1) 5 times, P1, K2tog, K2, rep from * to last 4 sts, yrn, P1, K3.

Row 48: As row 24.

Row 49: K1, (K1, P1) twice, K2tog, K2, yrn, P1, * P8, yon, K2, sl 1, K1, pssso, (P1, K1) 4 times, P1, K2tog, K2, yrn, P1, rep from * to last 4 sts, P3, K1.

Row 50: As row 22.

Row 51: (K1, P1) twice, K2tog, K2, yrn, P1, K1, * K8, P1, yon, K2, sl 1, K1, pssso, (P1, K1) 3 times, P1, K2tog, K2, yrn, P1, K1, rep from * to last 4 sts, K4.

Row 52: As row 20.

Row 53: K2, P1, K2tog, K2, yrn, P3, * P10, yon, K2, sl 1, K1, pssso, (P1, K1) twice, P1, K2tog, K2, yrn, P3, rep from * to last 4 sts, P3, K1.

Row 54: As row 18.

Row 55: K1, P1, K2tog, K2, yrn, P1, K3, * K10, P1, yon, K2, sl 1, K1, pssso, P1, K1, P1, K2tog, K2, yrn, P1, K3, rep from * to last 4 sts, K4.

Row 56: As row 16.

Graph For Cushion

KEY - Shaded area represents st repeat.

□ = Knit st on right side, purl st on wrong side (stocking st).

▣ = Purl st on right side, knit st on wrong side.

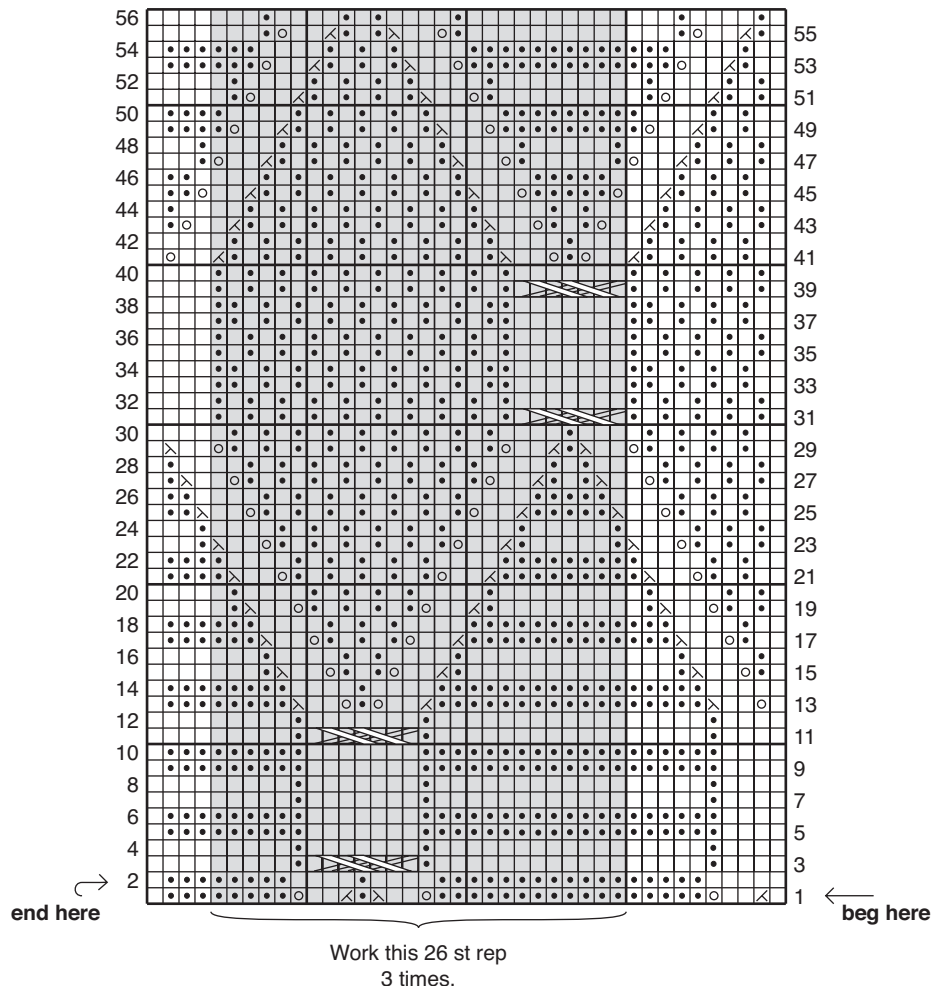
⊠ = □fwd, □on or □rn (to make a st).

⊞ = K2tog.

⊞ = Sl 1, K1, pssso.



⊞ = **C7F** - Slip next 4 sts onto cable needle and leave at front of work, K3, then K4 from cable needle.



□o□e □W When working from □raph, read odd numbered rows (right side rows) from right to left and even numbered rows (wrong side rows) from left to right.

□o□e □□ For each row, beg at edge and work to beg of rep, work rep 3 times, then work rem sts as indicated on □raph.



Level 7, 409 St Kilda Road
MELBOURNE VICTORIA 3004
A.B.N 85 055 366 590

T +61 3 9380 3888
F +61 3 9820 0989
pandayarns.com.au



This publication is protected by copyright. Reproduction in any form (including photocopying) without prior permission from Australian Country Spinners will lead to proceedings being brought to restrain any infringement. The only exception is photocopying to enlarge graphs and written instructions for graphs. We have made every effort to ensure that these instructions are accurate and complete. We cannot however be responsible for variations in individual work, human error, typographical mistakes or if yarn other than the recommended Panda yarn is used. Yarn colours shown may vary slightly due to printing process and different monitor settings.



For Australian residents -
If you need help with your pattern,
please phone 03 9380 3888
or Toll Free 1800 337 032
(9am to 4pm Mon - Fri E.S.T.)