

Cleckheaton

TWEED BEANIE



Rodinia Tweed
10 ply

TWEED BEANIE

Intermediate Knitting

MEASUREMENTS

Large Adult

To Fit Head (approx)

58cm

CLECKHEATON RODINIA TWEED 10 PLY 50g balls

Quantity (8106 Arid Dusk) 3

Use only the yarn specified. Other yarns are likely to produce different results. Quantity is approximate as it can vary between knitters. Ensure all yarn is from the same dye lot.

NEEDLES AND EXTRAS

- 1 set each 3.75mm (UK 9) and 4.5mm (UK 7) **double-pointed** knitting needles or size needed to give correct tension.
NOTE – 1 each 3.75mm and 4.5mm **circular** knitting needles (both 40cm long) may be used if desired, however a set of 4.5mm **double-pointed** needles will still be required for shaping crown.
- cable needle.
- wool needle for sewing in ends.
- pom pom maker.

TENSION

20.5 sts and 26 rounds to 10cm over stocking st, using 4.5mm needles.

To work a tension square, using **two** 4.5mm **double-pointed** needles, cast on 30 sts. Work 39 rows stocking st, working from same direction for each row (every row knit) and looping yarn loosely across back. Cast off loosely.

Check your tension carefully.

If fewer sts to 10cm use smaller needles, if more sts use larger needles.

NOTE – Beanie is worked on smaller needles than usually recommended for this yarn.

SPECIAL ABBREVIATIONS

C2L = cross 2 stitches left – Insert needle knitways into back loop of second st on left needle, knit this st then knit first st on left needle, slipping both sts off left needle.

C3F = cable over 3 stitches to front – Slip next 2 sts onto cable needle and leave at front of work, P1, then K2 from cable needle.

C3B = cable over 3 stitches to back – Slip next st onto cable needle and leave at back of work, K2, then P1 from cable needle.

C4F = cable over 4 stitches to front – Slip next 2 sts onto cable needle and leave at front of work, K2, then K2 from cable needle.



SPECIAL ABBREVIATIONS cont

C5F = cable over 5 stitches to front – Slip next 2 sts onto cable needle and leave at front of work, (K2, P1), then K2 from cable needle.

MB = make bobble – (K1, P1, K1, P1, K1) all into next st, **turn**, P5, **turn**, K5, **turn**, P2tog, P1, P2tog, **turn**, P3tog.

BEANIE

Using set of 3.75mm **double-pointed** needles, cast on 132 sts loosely and divide evenly between 3 needles. Join to work in rounds, taking care not to twist cast-on edge.

1st round – * P2, K2, rep from * to end.

Rep last round 8 times.

10th round – Rib 32, inc in next st, (rib 43, inc in next st) twice, rib to end ... 135 sts.

Change to set of 4.5mm **double-pointed** needles.

BEG MAIN PATT –

Work rounds 1 to 24 inclusive from graph or written instructions as follows –

1st round – * (P2, K2) twice, P2, **C2L**, P3, K4, P3, **C2L**, P2, **MB**, P4, **C5F**, P4, **MB**, P2, **C2L**, rep from * to end.

2nd and foll alt rounds – Knit all knit sts and purl all purl sts as they appear.

3rd round – * P2, **C3F**, **C3B**, P2, **C2L**, P3, **C4F**, P3, **C2L**, P6, **C3B**, P1, **C3F**, P6, **C2L**, rep from * to end.

5th round – * P3, **C4F**, P3, **C2L**, P2, **C3B**, **C3F**, P2, **C2L**, P5, **C3B**, P3, **C3F**, P5, **C2L**, rep from * to end.

7th round – * P3, K4, P3, **C2L**, P2, (K2, P2) twice, **C2L**, P4, **C3B**, P5, **C3F**, P4, **C2L**, rep from * to end.

9th round – * P3, **C4F**, P3, **C2L**, P2, **C3F**, **C3B**, P2, **C2L**, P3, **C3B**, P7, **C3F**, P3, **C2L**, rep from * to end.

11th round – * P2, **C3B**, **C3F**, P2, **C2L**, P3, **C4F**, P3, **C2L**, P2, **C3B**, P9, **C3F**, P2, **C2L**, rep from * to end.

13th round – * P2, (K2, P2) twice, **C2L**, P3, K4, P3, **C2L**, P2, K2, P5, **MB**, P5, K2, P2, **C2L**, rep from * to end.

15th round – * P2, **C3F**, **C3B**, P2, **C2L**, P3, **C4F**, P3, **C2L**, P2, **C3F**, P9, **C3B**, P2, **C2L**, rep from * to end.

17th round – * P3, **C4F**, P3, **C2L**, P2, **C3B**, **C3F**, P2, **C2L**, P3, **C3F**, P7, **C3B**, P3, **C2L**, rep from * to end.

19th round – * P3, K4, P3, **C2L**, P2, (K2, P2) twice, **C2L**, P4, **C3F**, P5, **C3B**, P4, **C2L**, rep from * to end.

21st round – * P3, **C4F**, P3, **C2L**, P2, **C3F**, **C3B**, P2, **C2L**, P5, **C3F**, P3, **C3B**, P5, **C2L**, rep from * to end.

23rd round – * P2, **C3B**, **C3F**, P2, **C2L**, P3, **C4F**, P3, **C2L**, P6, **C3F**, P1, **C3B**, P6, **C2L**, rep from * to end.

24th round – As 2nd round.
Last 24 rounds form main patt.
Work a further 12 rounds.

SHAPE CROWN –

1st round – * P2, (K2, P2) twice, **C2L**, P2tog, P1, K4, P1, P2tog, **C2L**, P2tog, K2, P5, **MB**, P5, K2, P2tog, **C2L**, rep from * to end ... 123 sts.

2nd and foll alt rounds – Knit all knit sts and purl all purl sts as they appear.

3rd round – * P2tog, **C3F**, **C3B**, P2tog, **C2L**, P2, **C4F**, P2, **C2L**, P1, **C3F**, P9, **C3B**, P1, **C2L**, rep from * to end ... 117 sts.

5th round – * P2, **C4F**, P2, **C2L**, P1, **C3B**, **C3F**, P1, **C2L**, P2tog, **C3F**, P7, **C3B**, P2tog, **C2L**, rep from * to end ... 111 sts.

7th round – * P2, (K2tog) twice, P2, **C2L**, P1, K2, P2, K2, P1, **C2L**, P2tog, **C3F**, P5, **C3B**, P2tog, **C2L**, rep from * to end ... 99 sts.

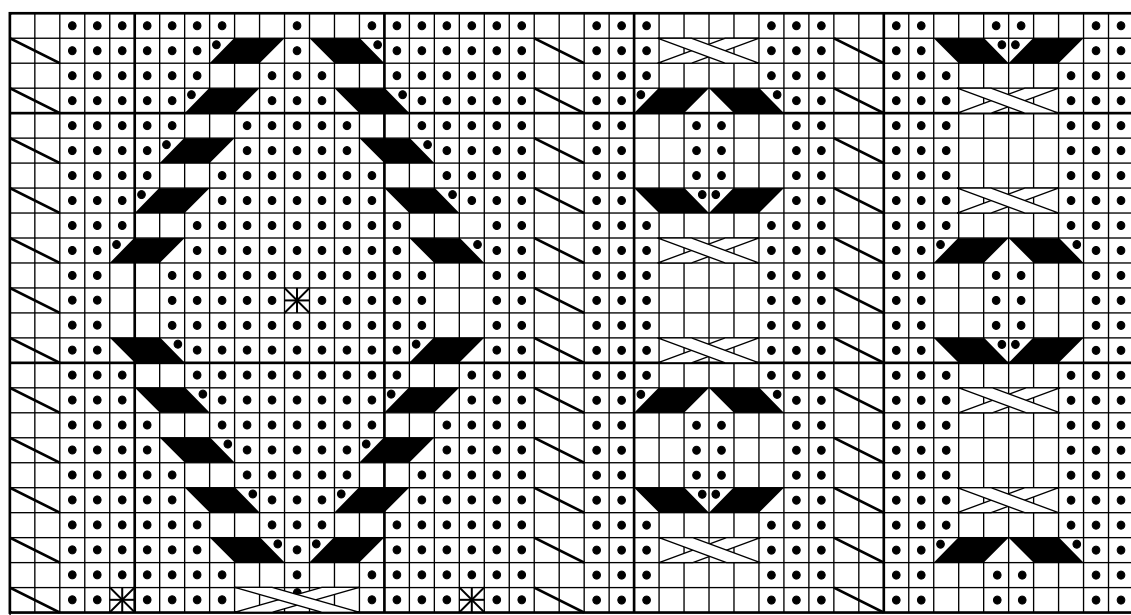
9th round – * P2tog, K2tog, P2tog, **C2L**, P2tog, (K2tog) twice, P2tog, **C2L**, P2tog, **C3F**, P3tog, **C3B**, P2tog, **C2L**, rep from * to end ... 66 sts.

11th round – * P1, K1, P1, K2tog, P1, K2tog, P1, K2tog, P2tog, K1, sl 1, K3tog, pssso, P2tog, K2tog, rep from * to end ... 39 sts.

12th round – As 2nd round.
Break off yarn, thread end through rem sts, draw up tightly and fasten off securely.

TO MAKE UP

Make a pom pom and attach securely to crown.



Work this 45 st patt rep 3 times

KEY

- = Knit
- = Purl
- = **C2L** – Knit into back of 2nd st, then knit first st, slipping both sts off needle tog.
- = **C3F** – Slip next 2 sts onto cable needle and leave at front of work, P1, then K2 from cable needle.
- = **C3B** – Slip next st onto cable needle and leave at back of work, K2, then P1 from cable needle.
- = **C4F** – Slip next 2 sts onto cable needle and leave at front of work, K2, then K2 from cable needle.
- = **C5F** – Slip next 2 sts onto cable needle and leave at front of work, (K2, P1), then K2 from cable needle.
- = **MB** – (K1, P1, K1, P1, K1) all into next st, **turn**, P5, **turn**, K5, **turn**, P2tog, P1, P2tog, **turn**, P3tog.

NOTE – When working from graph, read all rounds from right to left.

Cleckheaton

4 Lansell Street, Bendigo, VIC 3550

T +61 3 5442 4673

E enquiries@ausyarnco.com.au

cleckheaton.com.au /ausyarnco @ausyarnco

We have made every effort to ensure that these instructions are accurate and complete. We cannot be responsible for variations in individual work, human error or if yarn other than the recommended Cleckheaton yarn is used.

This publication is protected by copyright. Cleckheaton Rodinia Tweed 10 ply is a trade mark of The Australian Yarn Company. Yarn colours shown may vary on screen or when printing this document.