



From Patons Archive  
1980s

# Harmony Jumpers

PATONS TOTEM MERINO 8 ply

Grown & made in Australia



# Women's Harmony Jumper

Intermediate Knitting

## MEASUREMENTS

	S	M	L	XL	XXL
To Fit Bust	cm 80	90	100	110	120
Actual Size	cm 90	100	110	120	130
Length (approx)	cm 60	61	62	63	64
Sleeve Length	cm 43	43	43	43	43

## PATONS TOTEM MERINO 8 PLY 50g balls

Main Colour (M – 4389 Rhubarb)	12	13	15	16	18
1st Contrast (C1 – 4387 Hawthorn Rose)	2	2	2	2	2
2nd Contrast (C2 – 4444 Lady Coral)	1	1	1	1	1

**NOTE** – If sleeve length is altered, yarn quantity may need to be adjusted.

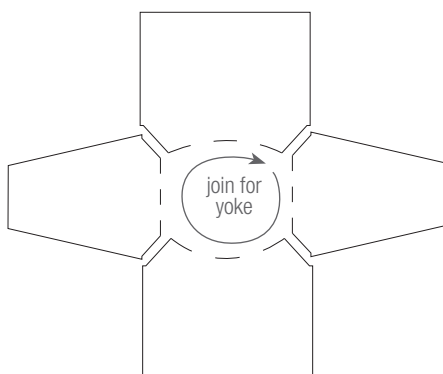
Use only the yarn specified. Other yarns are likely to produce different results. Quantities are approximate as they can vary between knitters. Ensure all yarn of the same colour is from the same dye lot.

## NEEDLES AND EXTRAS

- 1 pair each 3.25mm (UK 10), 4mm (UK 8) and 4.5mm (UK 7) knitting needles, 1 each 3.25mm (40cm long) and 4.5mm (40-60cm and 80-100cm long) **circular** knitting needles or size needed to give correct tension.

**NOTE** – 3.25mm, 4mm and 4.5mm **circular** knitting needles may be used instead of pairs up to Yoke if desired. Work backwards and forwards in rows.

- 4 stitch-holders.
- wool needle for sewing seams.



## TENSION

22 sts and 30 rows to 10cm over stocking st, using 4mm needles.

To work a tension square, using 4mm needles, cast on 33 sts.

Work 44 rows stocking st. Cast off loosely.

Check your tension carefully.

If fewer sts to 10cm use smaller needles, if more sts use larger needles.

## BACK

Using 3.25mm needles and **M**, cast on **103** (115-127-139-145) sts.

**1st row** – K2, \* P1, K1, rep from \* to last st, K1.

**2nd row** – K1, \* P1, K1, rep from \* to end.

Rep last 2 rows 10 times.

Change to 4mm needles.

Work 2 rows stocking st.

Change to 4.5mm needles.

## BEG COLOURWORK STRIPE –

Work rows 1 to 10 inclusive, foll colourwork graph A.

Change to 4mm needles.

Using **M**, cont until Back measures 38cm from beg, ending with a purl row.

## SHAPE RAGLAN ARMHOLES –

Cast off **2** (2-3-3-3) sts at beg of next 2 rows

... **99** (111-121-133-139) sts. \*\*

Dec one st at each end of next **9** (11-13-15-15) rows, then in every foll alt row **3** (4-4-6-6) times

... **75** (81-87-91-97) sts.

Work 1 row.

## BEG SHORT ROW SHAPING –

**NOTE** – When working short row shaping and pattern specifies **turn**, proceed as folls to avoid holes in your work –

Take yarn under needle and onto other side of work, slip next st onto right-hand needle, take yarn back to original position, slip st back onto left-hand needle, then turn and proceed as instructed in pattern.

**1st row** – K2tog, **K23** (25-27-28-30), **turn**.

**2nd, 4th and 6th rows** – Purl to end.

**3rd row** – K2tog, **K15** (17-19-18-20), **turn**.

**5th row** – K2tog, **K7** (9-11-8-10), **turn**.

**7th row** – K2tog, knit across all sts to last 2 sts, K2tog.

**8th row** – **P24** (26-28-29-31), **turn**.

**9th, 11th and 13th rows** – Knit to last 2 sts, K2tog.

**10th row** – **P16** (18-20-19-21), **turn**.

**12th row** – **P8** (10-12-9-11), **turn**.

**14th row** – Purl across all sts to end.

Leave rem **67** (73-79-83-89) sts on stitch-holder for Yoke.

## FRONT

Work as for Back to \*\*.

Dec one st at each end of next **8** (10-12-15-15) rows ... **83** (91-97-103-109) sts.

Work **0** (0-0-1-1) rows.

## BEG SHORT ROW SHAPING –

**1st row** – K2tog, **K26** (28-30-32-34), **turn**.

**2nd and foll alt rows** – Purl to end.

**3rd row** – K2tog, **K23** (25-27-29-31), **turn**.

**5th row** – K2tog, **K20** (22-24-26-28), **turn**.

Cont in this manner working 3 sts fewer before turning in every alt row until the row “**K2tog, K8** (7-9-8-10), **turn**” has been worked.

**Next row** – Purl to end.

**Next row** – K2tog, knit across all sts to last 2 sts, K2tog.

Proceed as folls –

**1st row** – **P27** (29-31-33-35), **turn**.

**2nd and foll alt rows** – Knit to last 2 sts, K2tog.

**3rd row** – **P24** (26-28-30-32), **turn**.

**5th row** – **P21** (23-25-27-29), **turn**.

Cont in this manner working 3 sts fewer before turning in every alt row until the row “**P9** (8-10-9-11), **turn**” has been worked.

**Next row** – Knit to last 2 sts, K2tog.

**Next row** – Purl across all sts to end.

Leave rem **67** (73-79-83-89) sts on stitch-holder for Yoke.

## SLEEVES

Using 3.25mm needles and **M**, cast on **49** (51-51-53-55) sts.

Work 17 rows rib as for Back.

**18th row** – Rib **9** (9-7-5-5), \* inc in next st, rib **5** (9-3-5-3), rep from \* to last **10** (12-8-6-6) sts, inc in next st, rib to end ... **55** (55-61-61-67) sts.

Change to 4mm needles.

Work 2 rows stocking st.

Change to 4.5mm needles.

## CONTACT US

4 Lansell Street, Bendigo, VIC 3550

T +61 3 5442 4673

E enquiries@ausyarnco.com.au

A.B.N 43 006 285 169

patonsyarns.com.au f /ausyarnco @ausyarnco

We have made every effort to ensure that these instructions are accurate and complete. We cannot be responsible for variations in individual work, human error or if yarn other than the recommended Patons yarn is used.

This publication is protected by copyright. Patons Totem Merino 8 ply is a trade mark of The Australian Yarn Company. Yarn colours shown may vary on screen or when printing this document.

## BEG COLOURWORK STRIPE –

Work rows 1 to 10 inclusive, foll colourwork graph A.

Change to 4mm needles.

Using **M**, inc one st at each end of next row, then in every foll **10th** (6th-6th-4th-4th) row until there are **63** (71-77-81-105) sts, then in every foll **12th** (8th-8th-6th-6th) row until there are **73** (83-89-99-111) sts.

Cont without further shaping until Sleeve measures 43cm (or length desired) from beg, ending with a purl row.

## SHAPE RAGLAN –

Cast off **2** (2-3-3-3) sts at beg of next 2 rows ... **69** (79-83-93-105) sts.

Dec one st at each end of next row, then in every foll 3rd row until **63** (73-69-71-95) sts rem, then in every foll alt row **8** (10-5-2-11) times ... **47** (53-59-67-73) sts.

Work 1 row.

Leave sts on stitch-holder for Yoke.

## YOKE

Using Mattress stitch, join raglan seams.

With right sides facing, slip sts from left Sleeve, Front, right Sleeve then Back onto 4.5mm

**circular** needle ... **228** (252-276-300-324) sts. Join to work in rounds.

Using **M**, work **1** (0-1-0-1) rounds stocking st (every round knit).

**NOTE** – Change to shorter circular needle when sts no longer fit comfortably.

Work rounds 1 to 15 inclusive, foll colourwork graph B.

**16th round** – \* Using **M** sl 1, K1, psso, using **C2** K3, using **M** K1, rep from \* to end ... **190** (210-230-250-270) sts.

Work rounds 17 to 19 inclusive from graph B.

**20th round** – Using **M**, \* K3, sl 1, K1, psso, rep from \* to end ... **152** (168-184-200-216) sts.

Work rounds 21 to 30 inclusive from graph B.

**31st round** – \* Using **C1** K1, using **M** K1, K2tog, rep from \* to end ... **114** (126-138-150-162) sts.

Work rounds 32 and 33 from graph B.

Change to 3.25mm **circular** needle and **M** for rem.

## BEG NECKBAND –

**1st round** – \* K5 (3-2-1-1), K2tog, rep from \* **15** (23-33-45-53) times, K2 (6-2-12-0)

... **98** (102-104-104-108) sts.

**2nd round** – \* K1, P1, rep from \* to end.

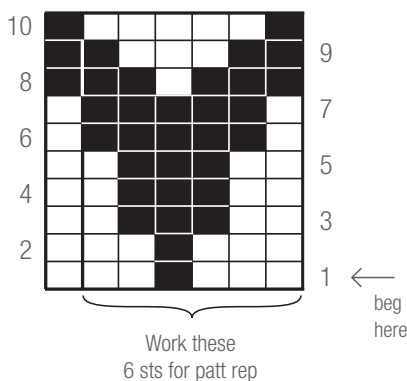
Rep last round 27 times.

Cast off loosely in rib.

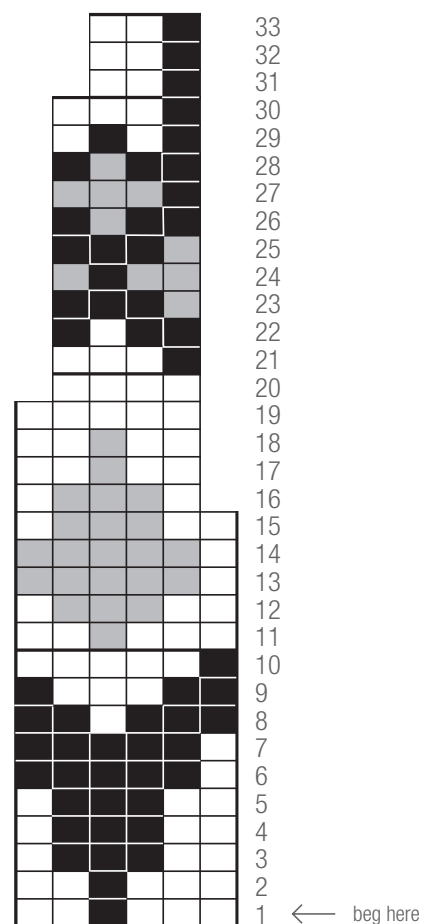
## TO MAKE UP

Using Mattress stitch, join side and sleeve seams. Fold Neckband in half to wrong side and using Slip-stitch, sew loosely in position.

### GRAPH A (rows)



### GRAPH B (rounds)



### KEY

- = M
- = C1
- = C2

**NOTE 1** – One block equals one stitch.

**NOTE 2** – When working from graph A, read odd-numbered (right side knit) rows from right to left and even-numbered (wrong side purl) rows from left to right.

When working from graph B, read all rounds as right side in stocking st (every round knit) from right to left.

**NOTE 3** – When working from graph A, work 6 sts marked for patt rep until the last st, then work rem st as indicated.

**NOTE 4** – Always carry colours to end of rows and rounds. Carry colour not in use loosely across wrong side. Always carry **M** above **C1** and **C2**, and **C1** above **C2**.

## CONTACT US

4 Lansell Street, Bendigo, VIC 3550

T +61 3 5442 4673

E enquiries@ausyarnco.com.au

A.B.N 43 006 285 169

patonsyarns.com.au f /ausyarnco @ausyarnco

# Men's Harmony Jumper

Intermediate Knitting

## MEASUREMENTS

	S	M	L	XL	XXL
To Fit Chest	cm 95	105	115	125	135
Actual Size	cm 105	115	125	135	145
Length (approx)	cm 67	68	69	70	71
Sleeve Length	cm 48	48	48	48	48

## PATONS TOTEM MERINO 8 PLY 50g balls

Main Colour

(M – 4392 Driftwood) 15 16 18 19 21

1st Contrast

(C1 – 4441 Hazlemere) 2 2 2 2 2

2nd Contrast

(C2 – 4329 Charcoal) 1 1 1 1 1

**NOTE** – If sleeve length is altered, yarn quantity may need to be adjusted.

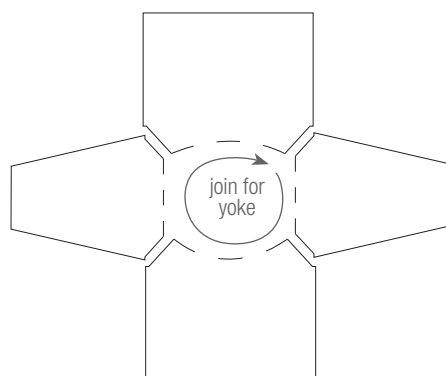
Use only the yarn specified. Other yarns are likely to produce different results. Quantities are approximate as they can vary between knitters. Ensure all yarn of the same colour is from the same dye lot.

## NEEDLES AND EXTRAS

- 1 pair each 3.25mm (UK 10), 4mm (UK 8) and 4.5mm (UK 7) knitting needles, 1 each 3.25mm (40cm long) and 4.5mm (40-60cm and 80-100cm long) **circular** knitting needles or size needed to give correct tension.

**NOTE** – 3.25mm, 4mm and 4.5mm **circular** knitting needles may be used instead of pairs up to Yoke if desired. Work backwards and forwards in rows.

- 4 stitch-holders.
- wool needle for sewing seams.



## TENSION

22 sts and 30 rows to 10cm over stocking st, using 4mm needles.

To work a tension square, using 4mm needles, cast on 33 sts.

Work 44 rows stocking st. Cast off loosely.

Check your tension carefully.

If fewer sts to 10cm use smaller needles, if more sts use larger needles.

## BACK

Using 3.25mm needles and **M**, cast on **115** (127-139-151-163) sts.

**1st row** – K2, \* P1, K1, rep from \* to last st, K1.

**2nd row** – K1, \* P1, K1, rep from \* to end.

Rep last 2 rows 10 times.

Change to 4mm needles.

Work 2 rows stocking st.

Change to 4.5mm needles.

## BEG COLOURWORK STRIPE –

Work rows 1 to 10 inclusive, foll colourwork graph A.

Change to 4mm needles.

Using **M**, cont in stocking st until Back measures 41cm from beg, ending with a purl row.

## SHAPE RAGLAN ARMHOLES –

Cast off **1** (2-2-3-3) sts at beg of next 2 rows ... **113** (123-135-145-157) sts. \*\*

Dec one st at each end of next row, then in every foll **3rd** (3rd-2nd-2nd-next) row until **99** (109-101-107-139) sts rem, then in every foll alt row **4** (6-0-0-15) times ... **91** (97-101-107-109) sts.

Work 1 row.

## BEG SHORT ROW SHAPING –

**NOTE** – When working short row shaping and pattern specifies **turn**, proceed as folls to avoid holes in your work –

Take yarn under needle and onto other side of work, slip next st onto right-hand needle, take yarn back to original position, slip st back onto left-hand needle, then turn and proceed as instructed in pattern.

**1st row** – K2tog, K28 (30-32-34-34), **turn**.

**2nd, 4th and 6th rows** – Purl to end.

**3rd row** – K2tog, K18 (20-22-22-22), **turn**.

**5th row** – K2tog, K8 (10-12-10-10), **turn**.

**7th row** – K2tog, knit across all sts to last 2 sts, K2tog.

**8th row** – P29 (31-33-35-35), **turn**.

**9th, 11th and 13th rows** – Knit to last 2 sts, K2tog.

**10th row** – P19 (21-23-23-23), **turn**.

**12th row** – P9 (11-13-11-11), **turn**.

**14th row** – Purl across all sts to end.

Leave rem **83** (89-93-99-101) sts on stitch-holder for Yoke.

## FRONT

Work as for Back to \*\*.

Dec one st at each end of next row, then in every foll **3rd** (3rd-2nd-2nd-next) row until **101** (109-113-121-139) sts rem, then in every foll alt row **0** (1-0-0-8) times ... **101** (107-113-121-123) sts.

Work **2** (1-1-1-1) rows.

## BEG SHORT ROW SHAPING –

**1st row** – K2tog, K32 (34-36-38-39), **turn**.

**2nd and foll alt rows** – Purl to end.

**3rd row** – K2tog, K28 (30-32-34-35), **turn**.

**5th row** – K2tog, K24 (26-28-30-31), **turn**.

Cont in this manner working 4 sts fewer before turning in every alt row until the row “K2tog, K4 (6-4-2-3), **turn**” has been worked.

**Next row** – Purl to end.

**Next row** – K2tog, knit across all sts to last 2 sts, K2tog.

Proceed as folls –

**1st row** – P33 (35-37-39-40), **turn**.

**2nd and foll alt rows** – Knit to last 2 sts, K2tog.

**3rd row** – P29 (31-33-35-36), **turn**.

**5th row** – P25 (27-29-31-32), **turn**.

Cont in this manner working 4 sts fewer before turning in every alt row until the row “P5 (7-5-3-4), **turn**” has been worked.

**Next row** – Knit to last 2 sts, K2tog.

**Next row** – Purl across all sts to end.

Leave rem **83** (89-93-99-101) sts on stitch-holder for Yoke.

## SLEEVES

Using 3.25mm needles and **M**, cast on **55** (57-59-63-65) sts.

Work 17 rows rib as for Back.

**18th row** – Rib **2** (11-9-11-5), \* inc in next st, rib **9** (11-5-13-7), rep from \* to last **3** (10-8-10-4) sts, inc in next st, rib to end ... **61** (61-67-67-73) sts.

Change to 4mm needles.

Work 2 rows stocking st.

Change to 4.5mm needles.

## CONTACT US

4 Lansell Street, Bendigo, VIC 3550

T +61 3 5442 4673

E enquiries@ausyarnco.com.au

A.B.N 43 006 285 169

patonsyarns.com.au f /ausyarnco @ausyarnco

### BEG COLOURWORK STRIPE –

Work rows 1 to 10 inclusive, foll colourwork graph A.

Change to 4mm needles.

Using **M**, inc one st at each end of next row, then in every foll **6th** (6th-**4th**-4th-**4th**) row until there are **77** (93-**71**-95-**101**) sts, then in every foll **8th** (8th-**6th**-6th-**6th**) row until there are **93** (97-**105**-113-**119**) sts.

Cont without further shaping until Sleeve measures 48cm (or length desired) from beg, ending with a purl row.

### SHAPE RAGLAN –

Cast off **1** (2-2-3-3) sts at beg of next 2 rows ... **91** (93-**101**-107-**113**) sts.

Dec one st at each end of next row, then in every foll 3rd row until **77** (75-**79**-77-**83**) sts rem, then in every foll alt row **8** (7-5-1-2) times ... **61** (61-**69**-75-**79**) sts.

Work 1 row.

Leave rem sts on stitch-holder for Yoke.

### YOKE

Using Mattress stitch, join raglan seams.

With right sides facing slip sts from left Sleeve, Front, right Sleeve then Back onto longer 4.5mm **circular** needle ... **288** (300-**324**-348-**360**) sts.

Join to work in rounds.

Using **M**, work **1** (0-1-0-1) rounds stocking st (every round knit).

**NOTE** – Change to shorter circular needle when sts no longer fit comfortably.

Work rounds 1 to 15 inclusive in colourwork, foll graph B.

**16th round** – \* Using **M** sl 1, K1, psso, using **C2** K3, using **M** K1, rep from \* to end ... **240** (250-**270**-290-**300**) sts.

Work rounds 17 to 19 inclusive from graph B.

**20th round** – Using **M**, \* K3, sl 1, K1, psso, rep from \* to end ... **192** (200-**216**-232-**240**) sts.

Work rounds 21 to 30 inclusive from graph B.

**31st round** – \* Using **C1** K1, using **M** K1, K2tog, rep from \* to end ... **144** (150-**162**-174-**180**) sts.

Work rounds 32 and 33 from graph B.

Change to 3.25mm **circular** needle and **M** for rem.

### BEG NECKBAND –

**1st round** – (K1, K2tog) **44** (46-**54**-47-**45**) times, (K2tog) **0** (0-0-15-**21**) times, K**12** (12-0-3-**3**) ... **100** (104-**108**-112-**114**) sts.

**2nd round** – \* K1, P1, rep from \* to end.

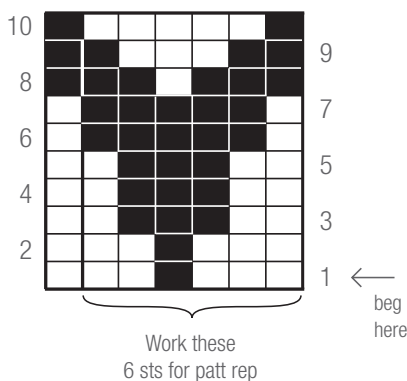
Rep last round 27 times.

Cast off loosely in rib.

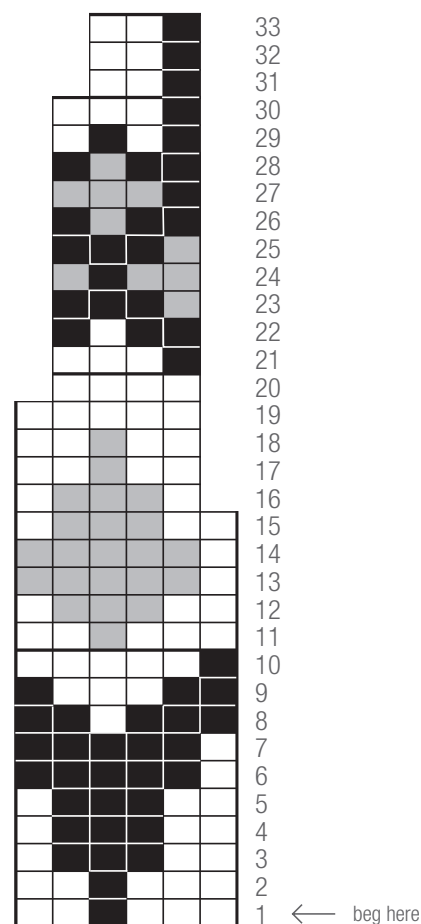
### TO MAKE UP

Using Mattress stitch, join side and sleeve seams. Fold Neckband in half to wrong side and using Slip-stitch, sew loosely in position.

### GRAPH A (rows)



### GRAPH B (rounds)



#### KEY

- = M
- = C1
- = C2

**NOTE 1** – One block equals one stitch.

**NOTE 2** – When working from graph A, read odd-numbered (right side knit) rows from right to left and even-numbered (wrong side purl) rows from left to right.

When working from graph B, read all rounds as right side in stocking st (every round knit) from right to left.

**NOTE 3** – When working from graph A, work 6 sts marked for patt rep until the last st, then work rem st as indicated.

**NOTE 4** – Always carry colours to end of rows and rounds. Carry colour not in use loosely across wrong side. Always carry **M** above **C1** and **C2**, and **C1** above **C2**.

### CONTACT US

4 Lansell Street, Bendigo, VIC 3550

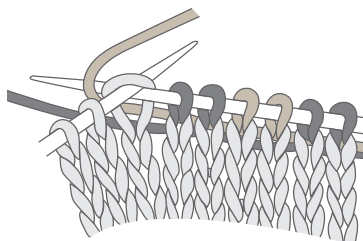
T +61 3 5442 4673

E enquiries@ausyarnco.com.au

A.B.N 43 006 285 169

patonsyarns.com.au f /ausyarnco @ausyarnco

## COLOURWORK



This is a technique to knit with two colours in the same row or round. The colour not in use is carried loosely across the wrong side of work so as not to distort the shape of the stitches being knitted. Twist colours at end of rows or rounds to carry them up.

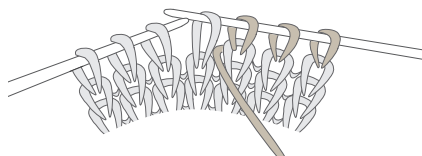
**METHOD ONE** – Working both yarns with the same hand, work as usual, dropping the yarn not in use and picking it up again when required, making sure that it is not pulled too firmly across the wrong side.

**METHOD TWO** – Hold the first colour in one hand and the second colour in the other. Work each colour as required, keeping the colour not in use loosely on wrong side of work. If there are more than 5 stitches worked in one colour, cross the yarns over each other on every 2nd or 3rd stitch to avoid long, loose strands.

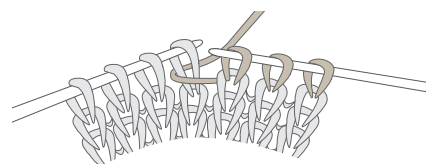
Always carry the same colour above the other throughout the row or round for a uniform appearance and to avoid the yarns becoming twisted.

## TURNING AND WORKING SHORT ROWS

Turning part way through a row is used to make one side of the work longer than the other.

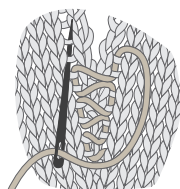


Slip the next stitch from the left-hand needle to the right-hand needle (this is the first stitch not being worked). Take the yarn back to its original position.



Slip the stitch back onto the left-hand needle. The unworked stitch now has the yarn wrapped around it – this is what prevents a hole. Turn the work and continue with next row as instructed.

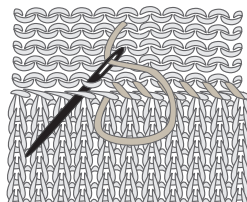
## MATTRESS STITCH SEAM



With right sides of knitting facing up and pieces side by side, insert wool needle from wrong side, between edge stitch and next stitch in first row. Insert needle from right side between same stitches on other piece then pass needle under 2 rows bringing it up to front again. Insert wool needle down in same space that last stitch on first piece came out of, pass needle under 2 rows bringing it up to front as before.

Swap from side to side always placing needle in same space that the last stitch came out of. Do not pull too tightly – the seam should be as elastic as the fabric it joins.

## SLIP-STITCH



Slip-stitch is used for securing turned hems, waistband casing or stitching double neckbands in place. Work 1 stitch through edge stitch and corresponding stitch of garment.

### CONTACT US

4 Lansell Street, Bendigo, VIC 3550

T +61 3 5442 4673

E [enquiries@ausyarnco.com.au](mailto:enquiries@ausyarnco.com.au)

A.B.N 43 006 285 169

[patonsyarns.com.au](http://patonsyarns.com.au) [f/ausyarnco](https://www.facebook.com/ausyarnco) [@ausyarnco](https://www.instagram.com/ausyarnco)

We have made every effort to ensure that these instructions are accurate and complete. We cannot be responsible for variations in individual work, human error or if yarn other than the recommended Patons yarn is used.

This publication is protected by copyright. Patons Totem Merino 8 ply is a trade mark of The Australian Yarn Company. Yarn colours shown may vary on screen or when printing this document.