

TEXTURED JUMPER

■■ Easy

MEASUREMENTS

		S	M	L
To Fit Bust	cm	75-80	85-90	95-100
Actual Size	cm	105	115	125
Length (approx)	cm	63	64	65
Sleeve Length	cm	50	50	50

PATONS JET 50g balls

Main Colour (M – 819 Silver)	10	11	12
Contrast Colour (C – 821 Burgundy)	9	10	11

Use only the yarn specified. Other yarns are likely to produce different results. Quantities are approximate as they can vary between knitters. Check the ball bands to ensure all yarn is from the same dye lot.

NEEDLES AND EXTRAS

- 1 pair each 5.00mm (UK 6) and 5.50mm (UK 5) knitting needles and a **set** each 5.00mm and 5.50mm **double-pointed** knitting needles or size needed to give correct tension.
- wool needle for sewing seams.

TENSION

18.5 sts and 25 rows to 10cm over patt, using 5.50mm needles. To work a tension square, using 5.50mm needles, cast on 26 sts. Work 40 rows patt as given for Back. Cast off loosely. Check your tension carefully.

If less sts to 10cm use smaller needles, if more sts use bigger needles.

With correct yarn and tension, your Jumper will look like our photograph.

NOTE – This instruction has been written specifically for the stitch pattern given. Using any other stitch may result in a garment that is the wrong shape or size.

BACK

Using 5.50mm needles and **M**, cast on **106** (114-122) sts.

Beg Band –

1st row – K2, * P2, K2, rep from * to end.

2nd row – P2, * K2, P2, rep from * to end.

Last 2 rows form rib.

Rep last 2 rows 8 times ... 18 rows rib in all.

Beg Patt –

1st row – K3, * P4, K4, rep from * to last 7 sts, P4, K3.

2nd row – P3, * K4, P4, rep from * to last 7 sts, K4, P3.

3rd row – As 1st row.

4th row – As 2nd row.

5th row – As 2nd row.

6th row – As 1st row.

7th row – As 2nd row.

8th row – As 1st row.

Rows 1 to 8 incl form patt.

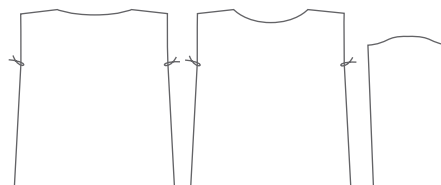
Work a further 4 rows patt.

Shape Sides –

Keeping patt correct, dec one st at each end of next row, then in every foll 26th row until **98** (106-114) sts rem.

Cont in patt until Back measures approx 47cm from beg, ending with a 4th or 8th patt row.

Tie a coloured thread at each end of last row to mark beg of armholes as there is no armhole shaping.



Work a further 8 rows patt.

Change to **C** for rem.

Next row – Knit (in place of 5th or 1st patt row). **

Keeping patt correct, work a further **25** (27-29) rows patt.

Shape Shoulders and Back Neck –

Next row – Keeping patt correct, cast off **6** (6-7) sts, patt **24** (25-27) *incl st rem on right-hand needle after casting off*, cast off next **38** (44-46) sts, patt to end.

Cont on these **30** (31-34) sts for left side of back neck.

Next row (wrong side) – Cast off **6** (6-7) sts, patt to last 2 sts, patt 2tog ... **23** (24-26) sts.

Next row – Patt 2tog, patt to end.

Next row – Cast off **6** (6-7) sts, patt to last 2 sts, patt 2tog.

Rep last 2 rows once ... **7** (8-8) sts.

Work 1 row.

Cast off rem **7** (8-8) sts.

With wrong side facing, join **C** to rem sts, patt 2tog, patt to end.

Cont on these **23** (24-26) sts for right side of back neck.

Next row – Cast off **6** (6-7) sts, patt to last 2 sts, patt 2tog.

Next row – Patt 2tog, patt to end.

Rep last 2 rows once ... **7** (8-8) sts.

Cast off rem **7** (8-8) sts.

FRONT

Work as for Back to **.

Keep patt correct, work a further **17** (19-21) rows patt.

Shape Neck –

Next row – Patt **38** (40-43), cast off next **22** (26-28) sts, patt to end.

Cont on these **38** (40-43) sts for right side of front neck.

Next row – Patt to last 2 sts, patt 2tog ... **37** (39-42) sts.

Next row – Cast off **3** (4-4) sts, patt to end ... **34** (35-38) sts.

Next row – Patt to last 2 sts, patt 2tog.

Next row – Cast off 2 sts, patt to end.

Rep last 2 rows once ... **28** (29-32) sts.

Dec one st at neck edge in next 2 rows ... **26** (27-30) sts.

Shape Shoulder –

1st row (wrong side) – Cast off **6** (6-7) sts, patt to end.

2nd row – Patt 2tog, patt to end.

3rd row – As 1st row.

4th row – Patt to end.

Rep last 2 rows once.

Cast off rem **7** (8-8) sts.

With wrong side facing, join **C** to rem **38** (40-43) sts for left side of front neck.

Next row – Cast off **3** (4-4) sts, patt to end ... **35** (36-39) sts.

Next row – Patt to last 2 sts, patt 2tog.

Next row – Cast off 2 sts, patt to end.

Rep last 2 rows once ... **29** (30-33) sts.

Dec one st at neck edge in next 2 rows ... **27** (28-31) sts.

Shape Shoulder –

Next row – Cast off **6** (6-7) sts, patt to last 2 sts, patt 2tog.

Work 1 row.

Rep last 2 rows once.

Next row – Cast off **6** (6-7) sts, patt to end.

Work 1 row.

Cast off rem **7** (8-8) sts.

For abbreviations and more on knitting techniques,
please see www.patonsyarns.com.au

SLEEVES

Using 5.00mm needles and **C**, cast on **50** (54-54) sts.

Work 18 rows rib as given for Back.

Change to 5.50mm needles.

Beg Patt –

1st row – K3 (1-1), * P4, K4, rep from * to last **7** (5-5) sts, P4, K3 (1-1).

2nd row – P3 (1-1), * K4, P4, rep from * to last **7** (5-5) sts, K4, P3 (1-1).

3rd row – As 1st row.

4th row – As 2nd row.

5th row – As 2nd row.

6th row – As 1st row.

7th row – As 2nd row.

8th row – As 1st row.

Rows 1 to 8 incl form patt.

Keeping patt correct and working extra sts into patt, inc one st at each end of next row, then in foll **42nd** (42nd-20th) row once, then in every foll **44th** (44th-22nd) row **1** (1-3) times ... **56** (60-64) sts.

Cont in patt until Sleeve measures 50cm from beg, working last row on wrong side.

Shape Top –

Keeping patt correct, cast off **6** (6-7) sts at beg of next 4 rows, then **5** (6-6) sts at beg of foll 2 rows ... **22** (24-24) sts.

Cast off rem sts.

POLO COLLAR

NOTE – We recommend using mattress stitch to sew up your handknit.

Join shoulder seams. With right side facing, using a **set** of 5.00mm **double-pointed** needles and **C** and beg at left shoulder seam, knit up **16** (21-23) sts evenly along left side of front neck, knit up **22** (26-28) sts across centre front cast off, knit up **16** (21-23) sts evenly along right side of front neck to shoulder seam, knit up 6 sts evenly along right side of back neck, knit up **38** (44-46) sts across centre back cast off, then knit up 6 sts evenly along left side of back neck ... **104** (124-132) sts.

1st round – * K2, P2, rep from * to end.

Rep last round until collar measures 10cm from beg.

Change to **set** of 5.50mm **double-pointed** needles and cont in rib until collar measures 27cm from beg.

Cast off loosely in rib.

TO MAKE UP

DO NOT PRESS. Placing centre of sleeve to shoulder seam, sew in sleeves evenly between coloured threads. Join side and sleeve seams. Fold polo collar onto right side.

 **Patons**

Level 7
409 St Kilda Road
MELBOURNE VICTORIA 3004
A.B.N 85 055 366 590

T +61 3 9380 3888
F +61 3 9820 0989
www.patonsyarns.com.au

 /auspinners



Patons Jet

70% Wool 30% Alpaca

Assistline

(Melbourne, Australia.)
+61 3 9380 3888

Toll Free

(Within Australia:
Outside Melbourne.)
1800 333 642

We have made every effort to ensure that these instructions are accurate and complete. We cannot be responsible for variations in individual work, human error or if yarn other than the recommended Patons yarn is used. This publication is protected by copyright. Patons Jet is a trade mark of Australian Country Spinners Pty Ltd. Yarn colours shown may vary slightly due to printing process.