

Cabled Scarf

MEASUREMENTS

Width	cm	22
Length (approx)	cm	190

MATERIALS

CLECKHEATON COUNTRY TARTAN 8 PLY 50g balls
OR COUNTRY 8 PLY 50g balls

Quantity 9

Use only the yarn specified. Other yarns are likely to produce different results.

Quantities are approximate as they can vary between knitters. Check the ball bands to ensure all yarn is from the same dye lot.

- 1 pair 4.50mm (UK 7) knitting needles or size needed to give correct tension.
- cable needle.
- wool needle for sewing in ends.

TENSION

This handknit has been designed at a tension of 21 sts and 29 rows to 10cm over stocking st, using 4.50mm needles.

To work a tension square, using 4.50mm needles, cast on 32 sts. Work 44 rows stocking st. Cast off loosely.

Check your tension carefully.

If less sts to 10cm use smaller needles, if more sts use bigger needles.

NOTE – This scarf has been worked on larger needles and at a looser tension than normally recommended.

SPECIAL ABBREVIATIONS

TW = Knit into back of 2nd st (taking needle behind first st), then into front of first st, slipping both sts off needle tog.

C4F = Slip next 2 sts onto cable needle and leave at front of work, K2, then K2 from cable needle.

C4B = Slip next 2 sts onto cable needle and leave at back of work, K2, then K2 from cable needle.

C6F = Slip next 3 sts onto cable needle and leave at front of work, K3, then K3 from cable needle.

C6B = Slip next 3 sts onto cable needle and leave at back of work, K3, then K3 from cable needle.

KNITTING ABBREVIATIONS

beg = begin/ning

cont = continue

K = knit

P = purl

patt = pattern

st/s = stitch/es

stocking st = knit right side rows, purl wrong side rows



SCARF

Using 4.50mm needles, cast on 70 sts.

Beg Band Patt –

1st row – P3, K2, P2, K2, (P3, **TW**) 3 times, (P3, K2) twice, P2, (K2, P3) twice, (**TW**, P3) 3 times, K2, P2, K2, P3.

2nd row – K3, P2, K2, P2, (K3, P2) 5 times, K2, (P2, K3) 5 times, P2, K2, P2, K3.

Last 2 rows form Band Patt.

Work a further 26 rows Band Patt ... 28 rows Band Patt in all.

Beg Main Patt –

Work rows 1 to 6 incl from Graph (see next page) or written instructions as follows –

1st row – P3, K6, (P3, **TW**) 3 times, P3, K4, **C4B**, **C4F**, K4, P3, (**TW**, P3) 3 times, K6, P3.

2nd row – K3, P6, (K3, P2) 3 times, K3, P16, (K3, P2) 3 times, K3, P6, K3.

3rd row – P3, **C6B**, (P3, **TW**) 3 times, P3, K2, **C4B**, K4, **C4F**, K2, P3, (**TW**, P3) 3 times, **C6F**, P3.

4th row – As 2nd row.

5th row – P3, K6, (P3, **TW**) 3 times, P3, **C4B**, K8, **C4F**, P3, (**TW**, P3) 3 times, K6, P3.

6th row – As 2nd row.

Rows 1 to 6 incl form patt.

Cont in patt until Scarf measures approx 180cm from beg, ending with a 6th patt row.

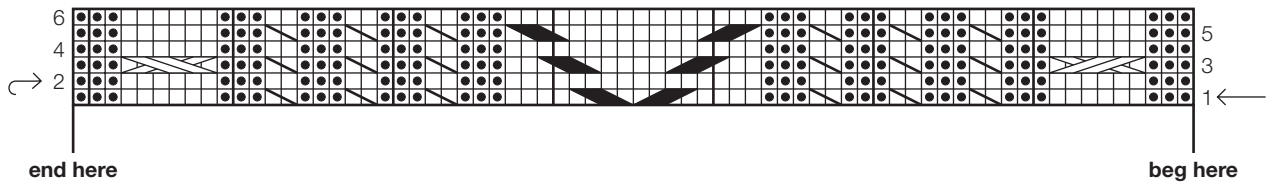
Beg Band Patt –

Work 28 rows Band Patt (as before).

Cast off loosely in patt.

TO MAKE UP

DO NOT PRESS. Sew in ends.



KEY

□ = Knit st on right side, purl st on wrong side.

■ = Purl st on right side, knit st on wrong side.

☞ = **TW** – Knit into back of 2nd st (taking needle behind first st), then into front of first st, slipping both sts off needle tog.

▬ = **C4F** – Slip next 2 sts onto cable needle and leave at front of work, K2, then K2 from cable needle.

▬ = **C4B** – Slip next 2 sts onto cable needle and leave at back of work, K2, then K2 from cable needle.

▬ = **C6F** – Slip next 3 sts onto cable needle and leave at front of work, K3, then K3 from cable needle.

▬ = **C6B** – Slip next 3 sts onto cable needle and leave at back of work, K3, then K3 from cable needle.

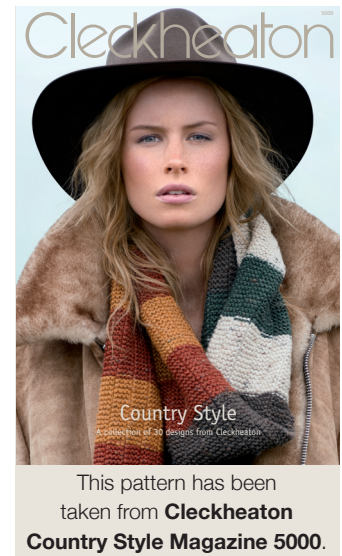
NOTE – When working from Graph, read odd numbered rows (right side rows) from right to left and even numbered rows (wrong side rows) from left to right.

CABLES



A cable is created by twisting one or more stitches in front of (or behind) another stitch or group of stitches. Where more than one stitch is being twisted, a cable needle is used to hold the first group of stitches.

The direction of the twist depends on whether the cable needle is held at the back or the front of the work.



This pattern has been taken from **Cleckheaton Country Style Magazine 5000**.

Cleckheaton

Level 7
409 St Kilda Road
MELBOURNE VICTORIA 3004
A.B.N 85 055 366 590

T +61 3 9380 3888

F +61 3 9820 0989

www.cleckheaton.com.au



hotline

For Australian residents – If you need help with your pattern, and are using the recommended Cleckheaton yarn, please phone 03 9380 3888 or Toll Free 1800 337 032, (9am to 4pm Mon – Fri E.S.T.).

If you live outside Australia please see our postal address and website opposite.

This pattern is protected by copyright. Reproduction in any form (including photocopying) without prior permission from Australian Country Spinners will lead to proceedings being brought to restrain any infringement. The only exception is photocopying to enlarge graphs and written instructions for graphs. We have made every effort to ensure that these instructions are accurate and complete. We cannot however be responsible for variations in individual work, human error, typographical mistakes or if yarn other than the recommended CLECKHEATON yarn is used.