



CANDYLAND JUMPER



Funshine

CANDYLAND JUMPER

Easy Knitting

MEASUREMENTS

YEARS		4	6	8	10	12
To Fit Chest	cm	60	65	70	75	80
Actual Size	cm	74	79	88	93	98
Length	cm	40	44	48	52	55
Sleeve Length	cm	28	33	38	40	42

PANDA FUNSHINE 100g balls

STYLE A – 2 Colour Stripes

Colourway 1 – pictured top left

1st Colour (C1 – 2802 Mist)	2	2	3	3	4
2nd Colour (C2 – 2807 Epic)	2	2	3	3	4

Colourway 2 – pictured centre left

1st Colour (C1 – 2800 Glow)	2	2	3	3	4
2nd Colour (C2 – 2804 Fury)	2	2	3	3	4

STYLE B – Single Colour

Colourway 1 – pictured bottom right

Quantity (2806 Bliss)	4	4	5	6	7
-----------------------	---	---	---	---	---

Colourway 2 – pictured centre right

Quantity (2803 Magic)	4	4	5	6	7
-----------------------	---	---	---	---	---

Use only the yarn specified. Other yarns are likely to produce different results. Quantities are approximate as they can vary between knitters. Ensure all yarn of the same colour is from the same dye lot.

NEEDLES AND EXTRAS

- 1 pair each 4.5mm (UK 7) and 5.5mm (UK 5) knitting needles or size needed to give correct tension.
- 2 stitch-holders.
- wool needle for sewing seams.

TENSION

15 sts and 20 rows to 10cm over stocking st, using 5.5mm needles.

To work a tension square, using 5.5mm needles, cast on 22 sts.

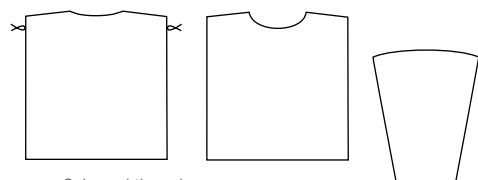
Work 30 rows stocking st (knit 1 row, purl 1 row).

Cast off loosely.

Check your tension carefully.

If fewer sts to 10cm use smaller needles,

if more sts use larger needles.



∞ = Coloured thread



Style A, Colourway 1

STYLE A – 2 Colour Stripes

BACK

Using 4.5mm needles and C1, cast on 57 (61-69-71-77) sts.

BEG RIB –

1st row – K2, * P1, K1, rep from * to last st, K1.

2nd row – K1, * P1, K1, rep from * to end.

Rep last 2 rows 3 times, then 1st row once.

Next row – Purl.

Change to 5.5mm needles and C2.

BEG STRIPE PATT –

Using C2, work 10 rows stocking st (knit 1 row, purl 1 row).

Using C1, work 10 rows.

Last 20 rows form stripe patt for rem.

NOTE – When working in stripes, carry yarn not in use loosely along side edge of work, twisting yarns tog in every alt row to keep edges neat.

Cont in stripe patt until Back measures 34 (38-42-46-48) cm from beg, ending with a purl row.

Tie a coloured thread at each end of last row to mark corresponding front neck shaping.

Work a further 14 (14-14-14-16) rows.

SHAPE SHOULDERS AND BACK NECK –

1st row – Cast off 6 (6-8-8-9) sts, K15 (16-18-19-20) including st already on needle after casting off, turn to divide for neck.

Cont on these 15 (16-18-19-20) sts for right side of back neck.

2nd row – P2tog, purl to end ... 14 (15-17-18-19) sts.

3rd row – Cast off 6 (6-8-8-9) sts, knit to last 2 sts, K2tog ... 7 (8-8-9-9) sts.

4th row – P2tog, purl to end.

Cast off rem 6 (7-7-8-8) sts.

Slip next 15 (17-17-17-19) sts onto stitch-holder and leave for Neckband.

With right side facing, join appropriate yarn to rem 21 (22-26-27-29) sts for left side of back neck and knit to end.

Next row – Cast off 6 (6-8-8-9) sts, purl to last 2 sts, P2tog ... 14 (15-17-18-19) sts.

Next row – K2tog, knit to end ... 13 (14-16-17-18) sts.

Next row – Cast off 6 (6-8-8-9) sts, purl to last 2 sts, P2tog.

Work 1 row.

Cast off rem 6 (7-7-8-8) sts.

FRONT

Work as for Back to coloured threads.

SHAPE NECK –

1st row – K25 (26-30-31-33), turn to divide for neck.

Cont on these 25 (26-30-31-33) sts for left side of neck.

Dec one st at neck edge in next 2 rows, then in every foll alt row 5 times ... 18 (19-23-24-26) sts. Work 1 (1-1-1-3) rows.

SHAPE SHOULDER –

Next row – Cast off 6 (6-8-8-9) sts, knit to end ... 12 (13-15-16-17) sts.

Work 1 row.

Rep last 2 rows once.

Cast off rem 6 (7-7-8-8) sts.

Slip next 7 (9-9-9-11) sts onto stitch-holder and leave for Neckband.

With right side facing, join appropriate yarn to rem 25 (26-30-31-33) sts for right side of neck and knit to end.

Dec one st at neck edge in next 2 rows, then in every foll alt row 5 times ... 18 (19-23-24-26) sts.

Work 2 (2-2-2-4) rows.

SHAPE SHOULDER –

Next row – Cast off 6 (6-8-8-9) sts, purl to end ... 12 (13-15-16-17) sts.

Work 1 row.

Rep last 2 rows once.

Cast off rem 6 (7-7-8-8) sts.

SLEEVES

Using 4.5mm needles and C1, cast on 27 (29-29-31-31) sts.

Work 7 rows rib as for Back.

Next row – Purl.

Change to 5.5mm needles and C2.

Working in stripe patt as for Back for rem, work 4 rows stocking st.

Inc one st at each end of next row, then in every foll 6th row until there are 33 (33-41-47-51) sts, then in every foll 8th row until there are 39 (43-47-51-53) sts.

Cont without further shaping until Sleeve measures 28 (33-38-40-42) cm from beg, ending with a purl row.

SHAPE TOP –

Cast off 4 (5-5-6-6) sts at beg of next 4 rows, then 5 (4-6-5-6) sts at beg of next 2 rows.

Cast off rem 13 (15-15-17-17) sts.

NECKBAND

Using Mattress stitch, join right shoulder seam.

With right side facing, using 4.5mm needles and C1, knit up 18 (18-18-18-20) sts evenly along left side of front neck, knit across sts from front stitch-holder, knit up 18 (18-18-18-20) sts evenly along right side of front neck to shoulder seam, knit up 4 sts evenly along right side of back neck, knit across sts from back stitch-holder – dec one st in centre, then knit up 4 sts evenly along left side of back neck ... 65 (69-69-69-77) sts.

Work 5 rows rib as for Back, beg with 2nd row.

Next row – Knit.

Next row – Purl.

Cast off very loosely knitways.

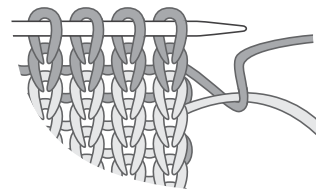
TO MAKE UP

Join left shoulder and neckband seam. Measure down 13 (14-16-17-18) cm from each shoulder seam on Back and Front and tie another coloured thread at side edges to mark armholes. Placing centre of sleeve top to shoulder seam, sew in Sleeves evenly between coloured threads. Join side and sleeve seams. Sew in ends.

STYLE B – Single Colour

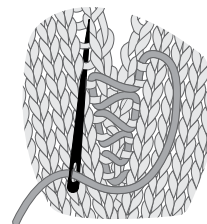
Work as for Style A using single colour throughout.

CARRYING COLOUR



Do not break off colours when not in use, but carry loosely up side edge of work. Twist yarns on every alternate row to keep edge neat.

MATTRESS STITCH SEAM



With right sides facing up and pieces side by side, insert wool needle from wrong side, between edge stitch and next stitch in first row. Insert needle from right side between same stitches on other piece then pass needle under 2 rows bringing it up to front again. Insert wool needle down in same space that last stitch on first piece came out of, pass needle under 2 rows bringing it up to front as before. Swap from side to side always placing needle in same space that the last stitch came out of. Do not pull too tightly – the seam should be as elastic as the knitting.



4 Lansell Street, Bendigo, VIC 3550

T +61 3 5442 4673

E enquiries@ausyarnco.com.au

pandayarns.com.au  /ausyarnco  @ausyarnco

We have made every effort to ensure that these instructions are accurate and complete. We cannot be responsible for variations in individual work, human error or if yarn other than the recommended Panda yarn is used. This publication is protected by copyright. Panda Funshine is a trade mark of The Australian Yarn Company. Yarn colours shown may vary on screen or when printing this document.